

En Suite Pod

TAPLANES INSTALLATION INSTRUCTIONS TO BE USED AS A PRIMARY GUIDE.

**CONSULT ALL OTHER MANUFACTURERS' GUIDES
AFTER READING AND UNDERSTANDING TAPLANES
REQUIREMENTS.**

TAPLANES LIMITED

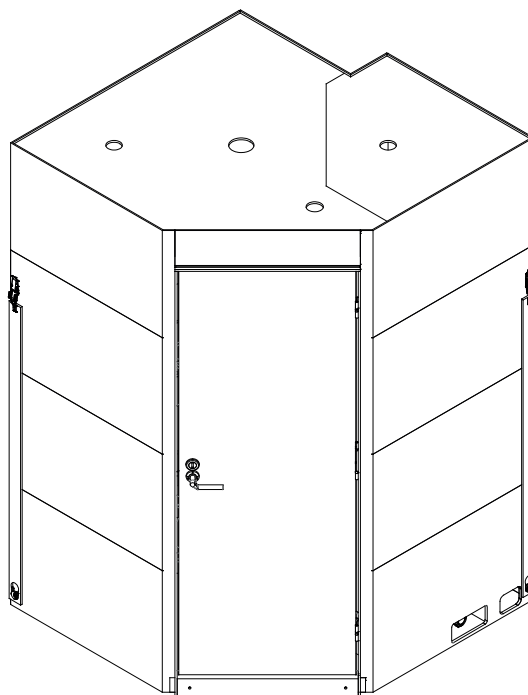
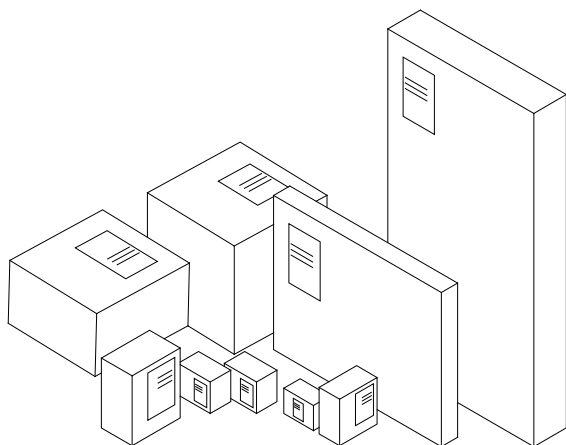
Station Court
Nidd
Harrogate
North Yorkshire
HG3 3BG

ENQUIRIES

📞 01423 771 645
✉ enquiries@taplanes.co.uk
🌐 www.taplanes.co.uk

En suite Pod as Delivered to Site

- Assembled En suite Pod (including pre-fitted vanity carcass*, WC fixing-frame*, mixer console* and external door - fitted if stud and trench type fascias are used; supplied only if door casing is used)
- Washbasin supplied only
- WC Pan with cistern supplied only
- Mirror*
- Internal Shower Door*/Curtain*
- Shower valve, fittings and other plumbing materials*
- Extraction*
- Electrical appliances (LED Lights, PIR Sensor)*
- External Door & Door Casing*

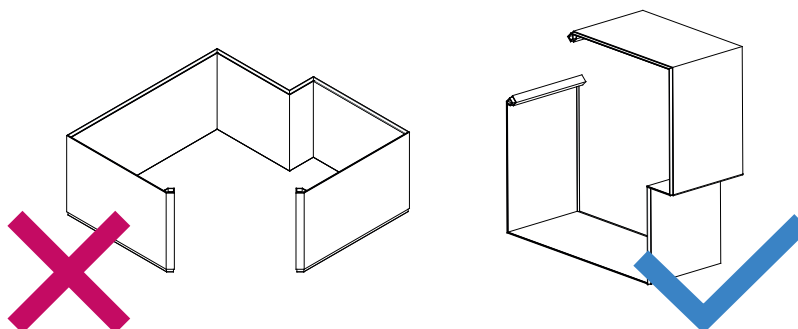


Unless stated otherwise, all components are to be fitted on site by installers.

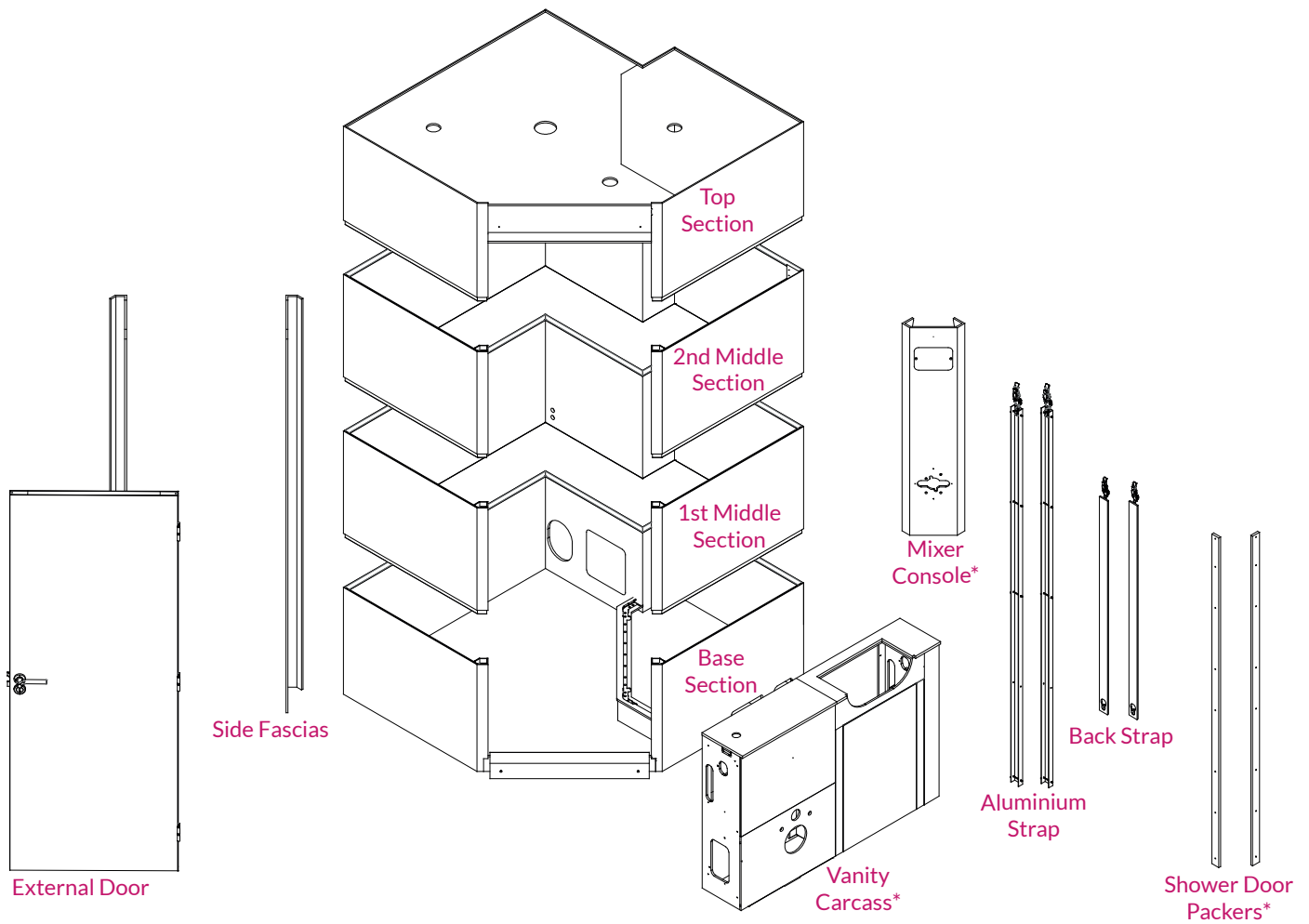
*Optional, supply only accessories. Please refer to manufacturers' installation instructions.

HANDLING GUIDELINES:

- Units are heavy and should be handled by four people when dismantling and assembling.
- Dismantle at the time of delivery if needed for access.
- Extra caution to be taken to protect tongue and groove.



En suite Pod Dismantling Instructions

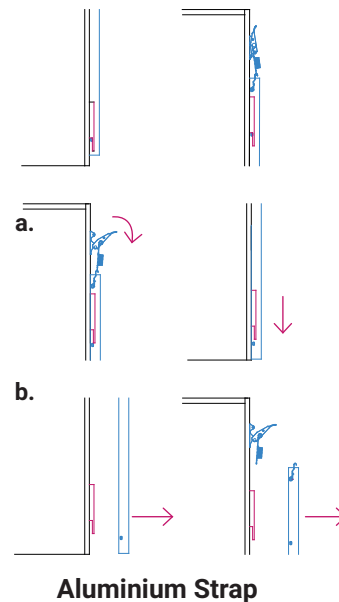
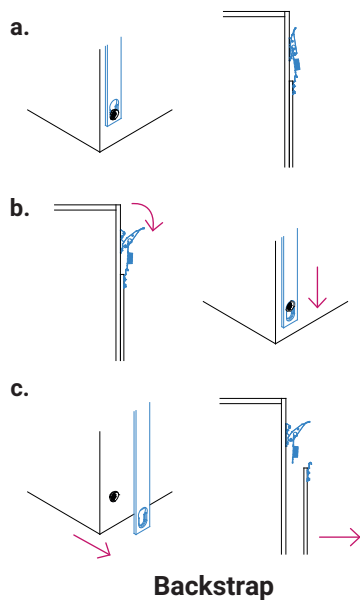


NOTE:

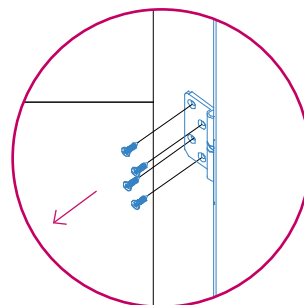
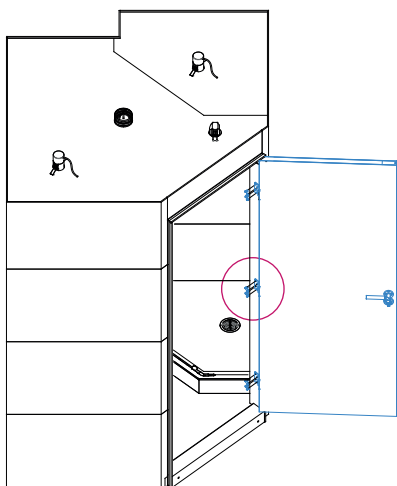
- Spare screws and cover caps are provided in an envelope.
- Take care not to lose any removed screws.
- Do not mix sections from different units.
- No. of sections may vary by design.

*Optional, supply only accessories. Please refer to manufacturer's installation instructions.

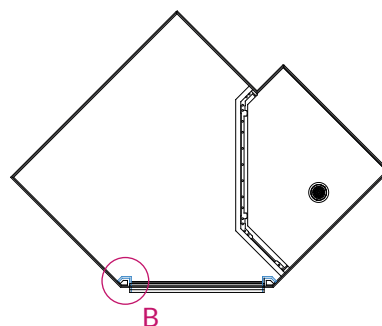
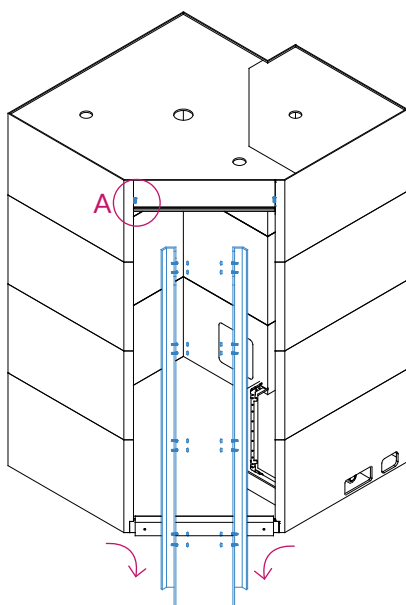
1. Remove backstraps and/or aluminium straps.



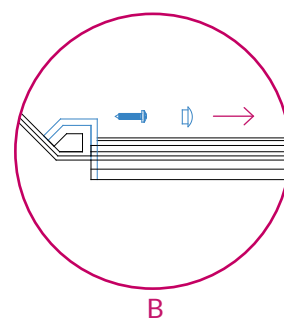
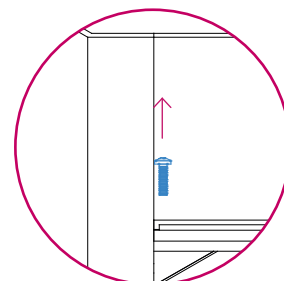
2. Take off door by removing screws connecting door hinges to fascias (applicable only for stud and trench type fascias).

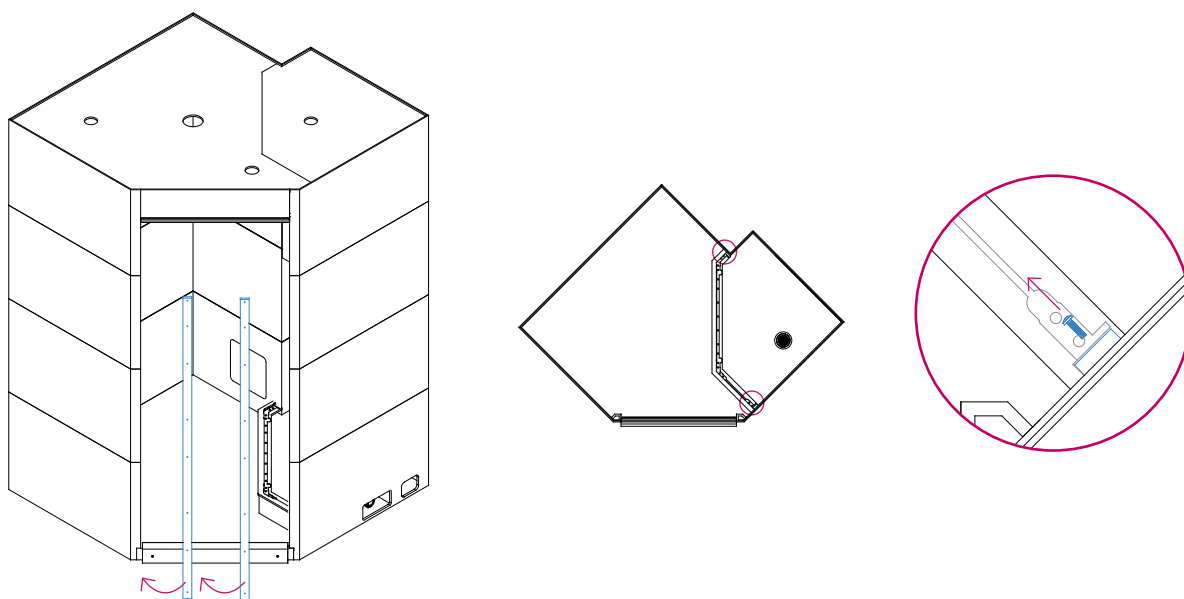


3. Take off side fascias by removing cover caps and screws.

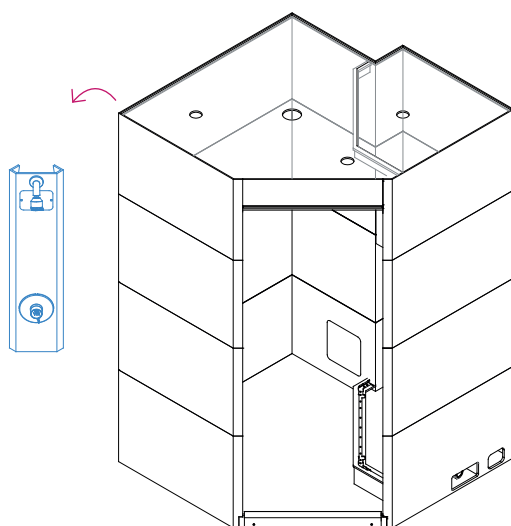


NOTE: Check if screw in diagram A is used on unit as it may not always be required.

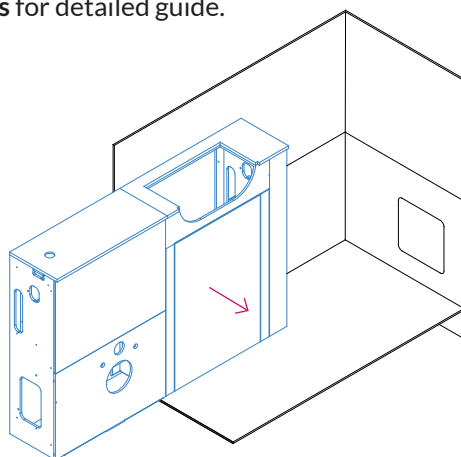




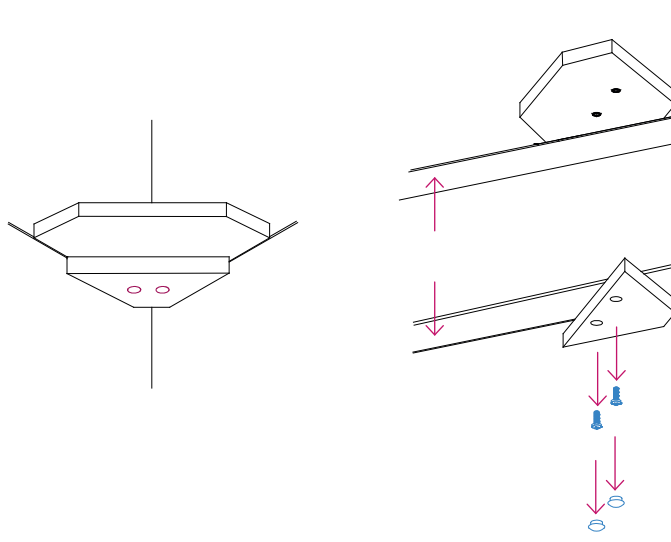
5. Remove mixer console (if applicable). Refer to **Taplanes Mixer Console Installation Instructions** as a guide.



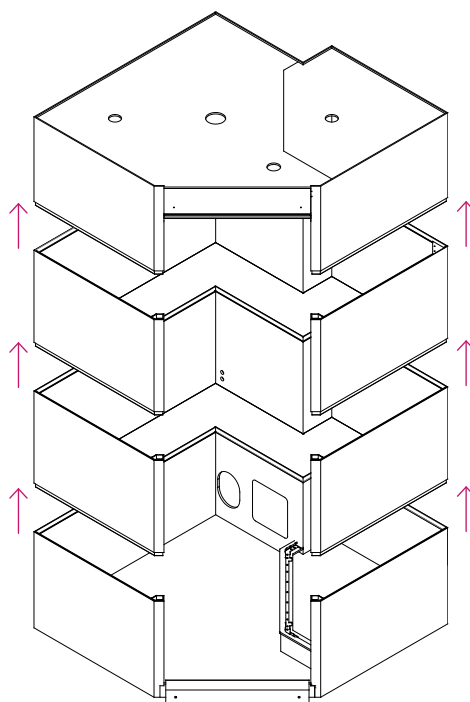
6. Remove vanity carcass (if applicable). Refer to **Taplanes Vanity Installation Instructions** for detailed guide.



7. Separate soap dishes by removing cover caps and screws.

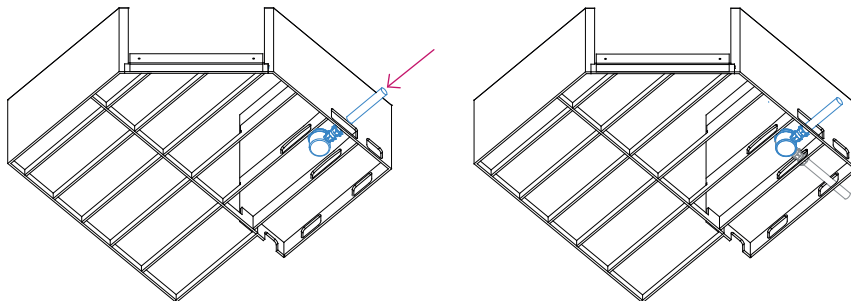


8. Lift sections in sequence from top to bottom.

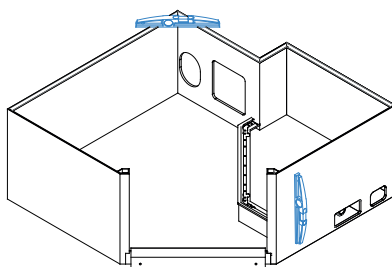


En suite Pod Installation Instructions

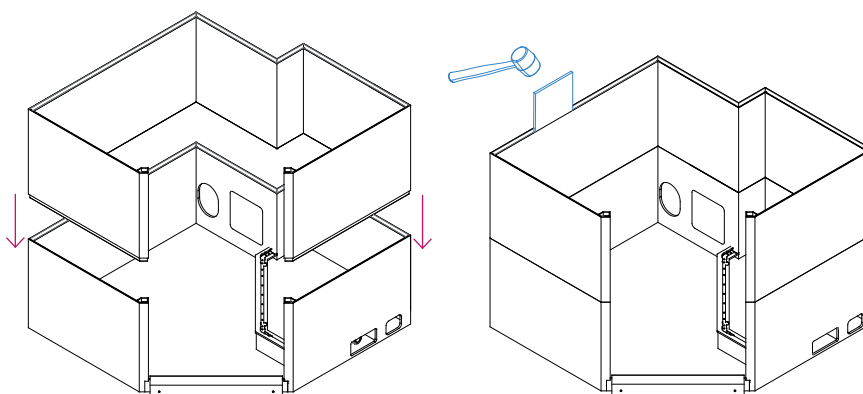
1. Plumb base section and check for leaks.



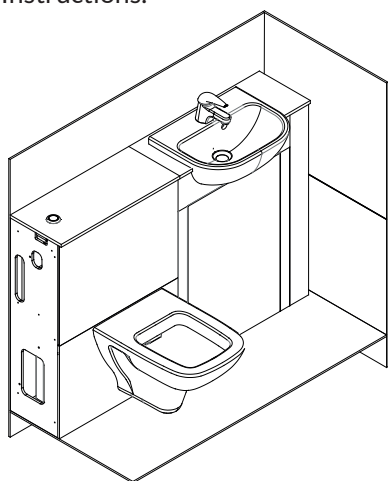
2. Position the base and check level (usually achieved with levelling compound or packers).



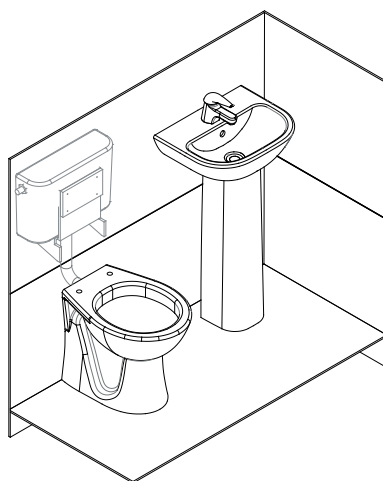
3. Slot in 1st middle section and secure with tapping tool and mallet.



4. Fit sanitaryware. Detailed installation instructions can be found in **Taplanes Vanity** or **Taplanes Sanitaryware** Installation Instructions.



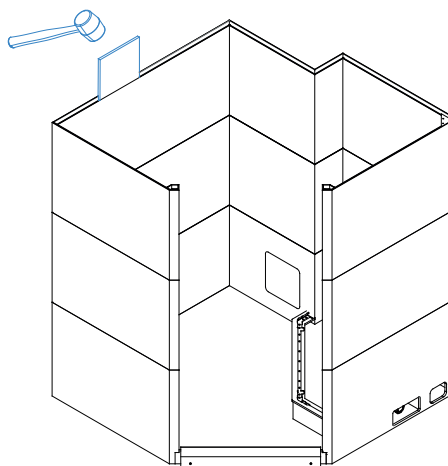
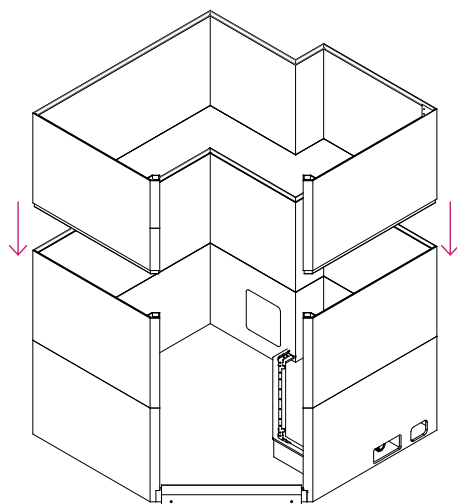
OPTION 1



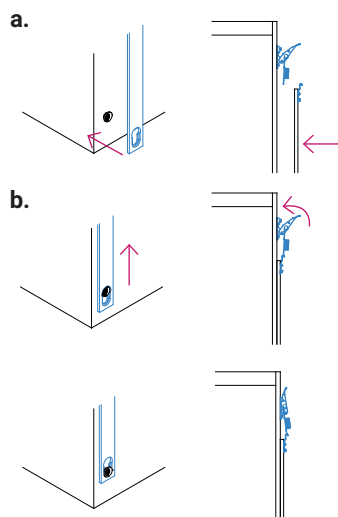
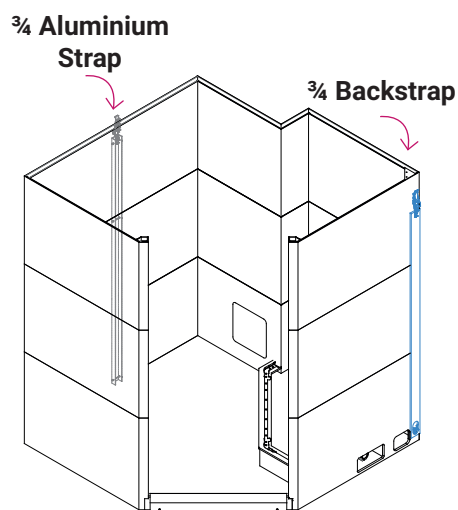
OPTION 2

WARNING!
Ensure hot and cold feed are in place before proceeding to next section.

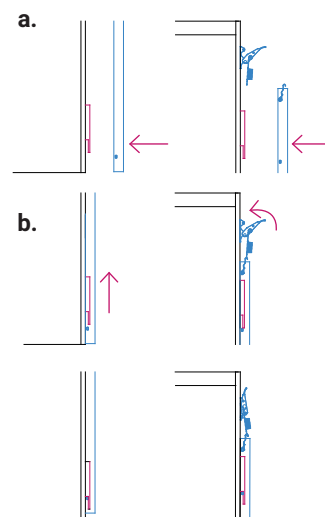
5. Slot in 2nd middle section and secure with tapping tool and mallet. Repeat with 3rd and 4th middle section if applicable.



6. Attach $\frac{3}{4}$ backstraps and $\frac{3}{4}$ aluminium straps (where applicable).

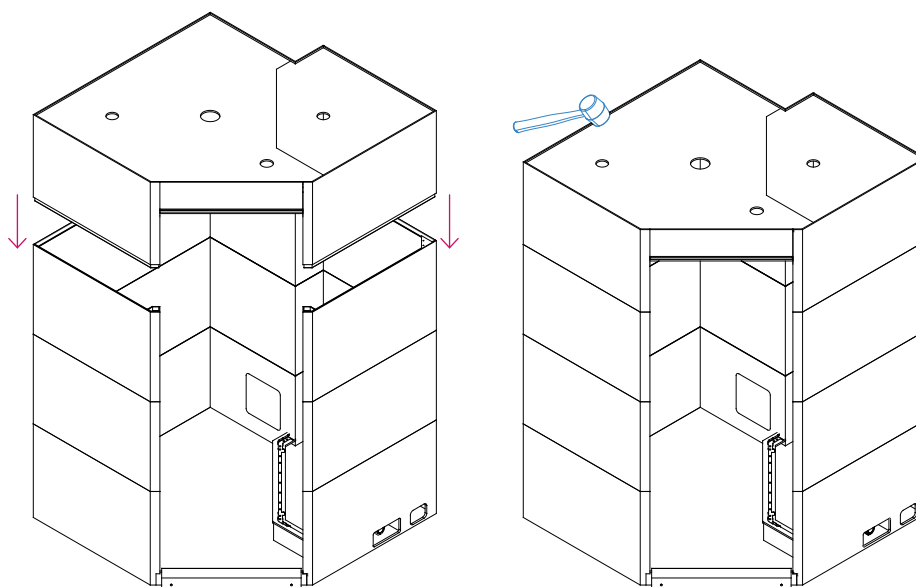


$\frac{3}{4}$ Backstrap

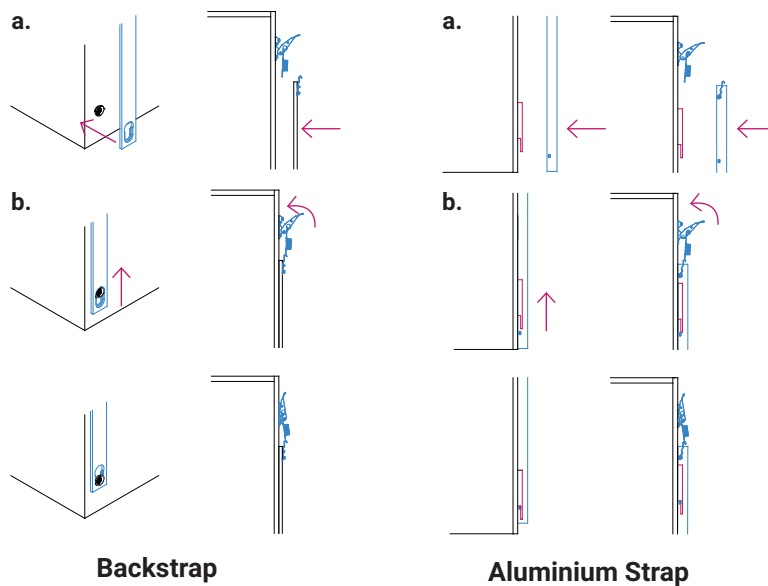
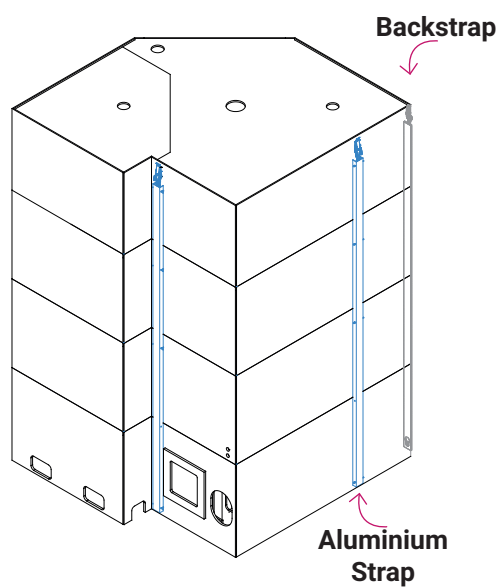


$\frac{3}{4}$ Aluminium Strap

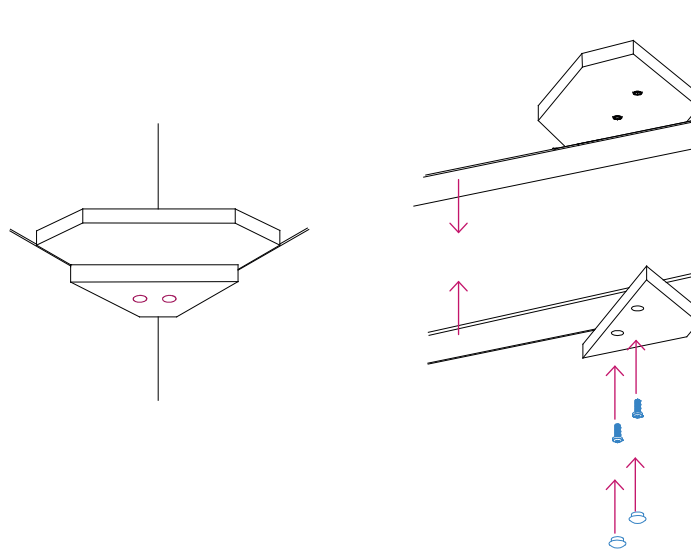
7. Slot in top section and secure with mallet.



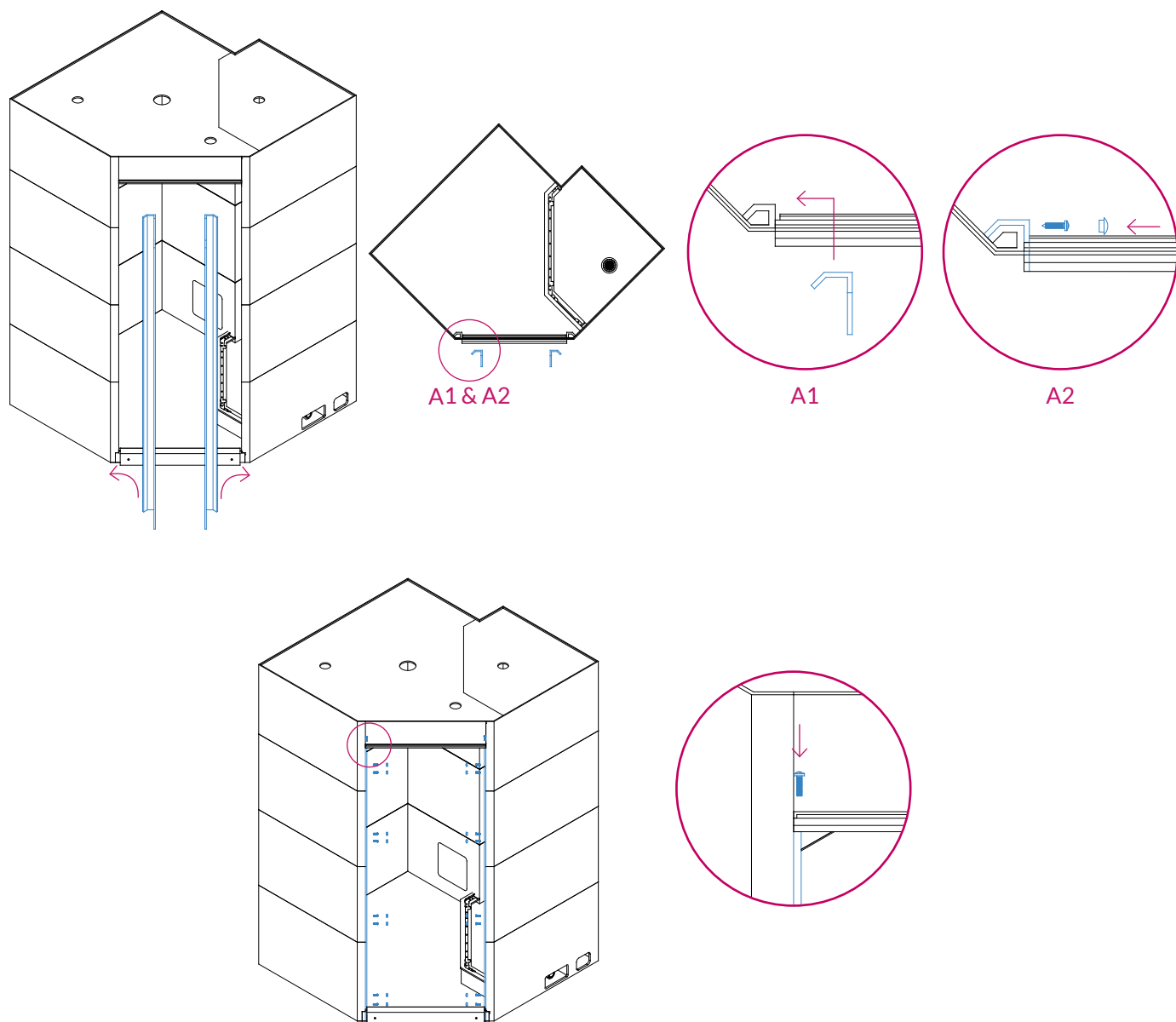
8. Attach full length aluminium straps and full length backstraps (if applicable).



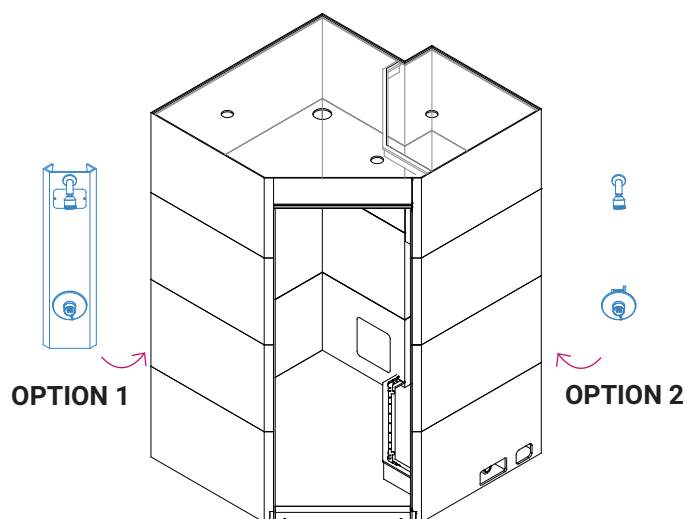
9. Secure top and last middle sections by joining soap dishes with screws and fit cover caps.



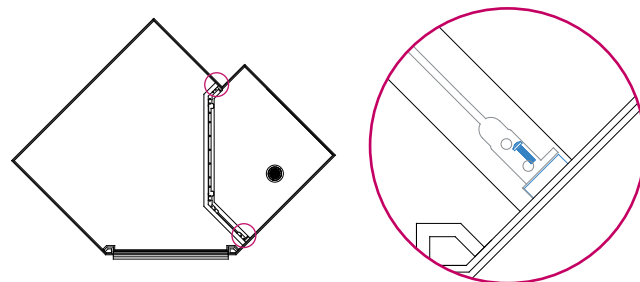
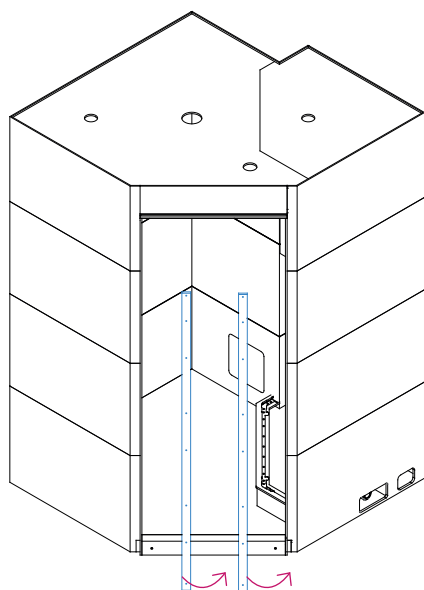
10. Fit side fascias and fix with screws and cover caps from envelope (be sure to also use previously removed screws).



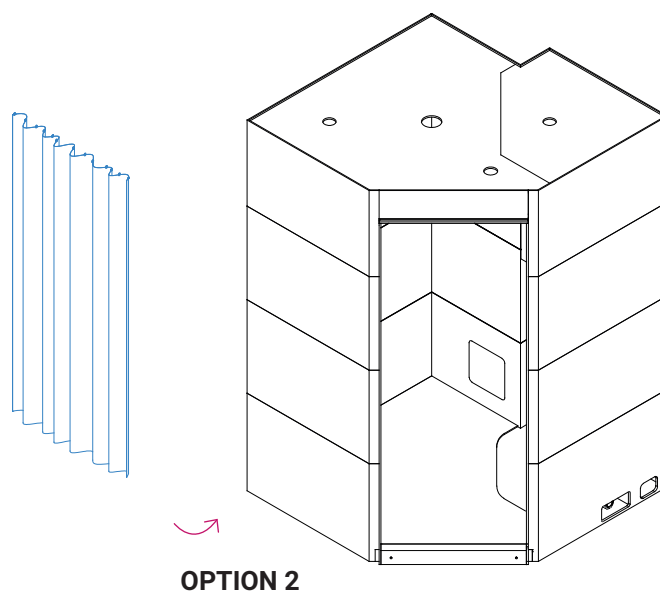
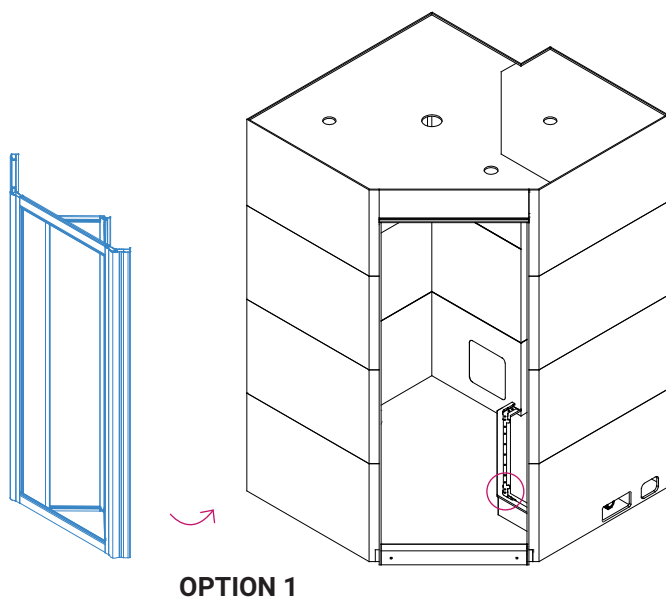
11. Plumb shower fittings. Refer to **Taplanes Mixer Console Installation Instructions or manufacturer's shower valve Installation Instructions as a guide.**



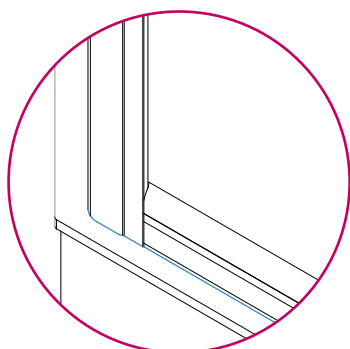
12. Fit door packers using previously removed screws (where required).



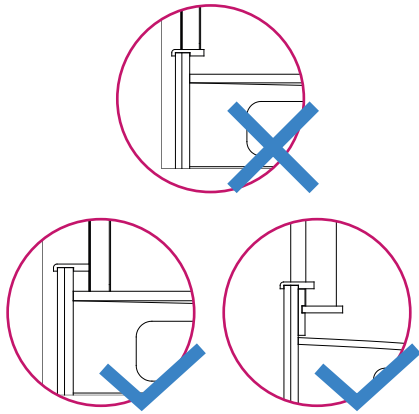
13. Fit shower door/curtain.



Adjust door position to ensure that shower door profile follows step profile. Refer to door manufacturer's instructions.

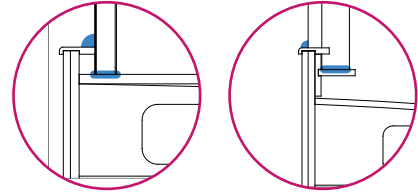


NOTE: Manufacturer's guide may show the door resting on top of step. For the Taplanes cubicle, ensure that door is resting on the floor or door supports.

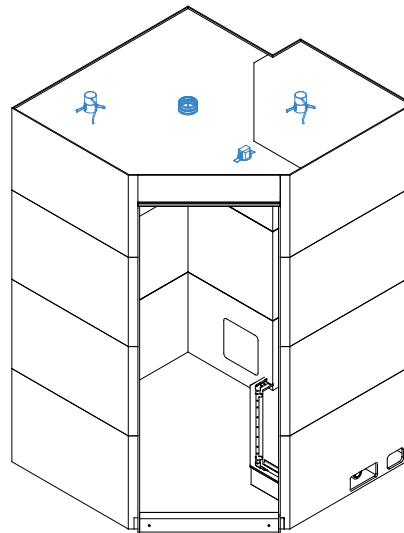
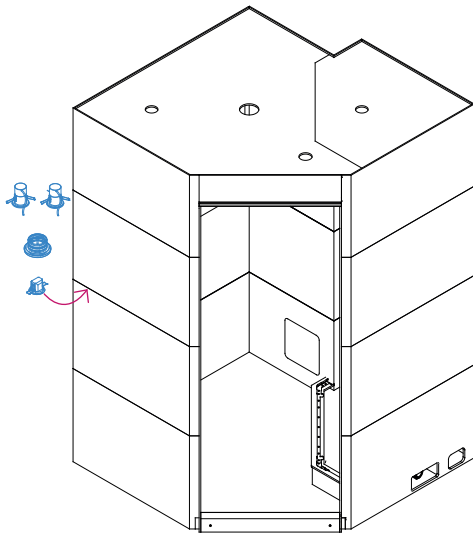


WARNING!

Do not use silicon in the areas marked on the diagrams below.



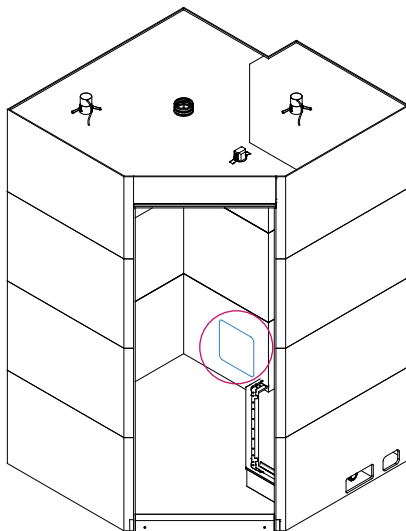
14. Refer to manufacturers' instructions to fit lights, extractors and PIR Sensors.



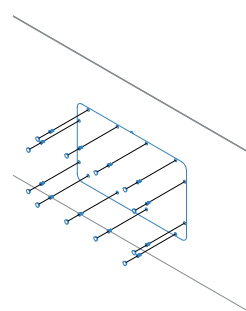
WARNING!

Lights, extractors and PIR sensors to be installed by certified electricians.

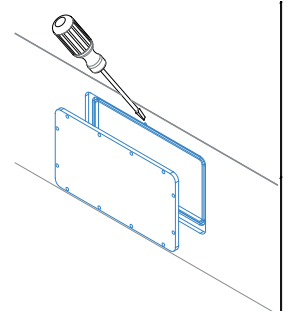
Removing access panel:



1. Remove cover caps and screws.



2. Use driver to loosen access panel and remove.

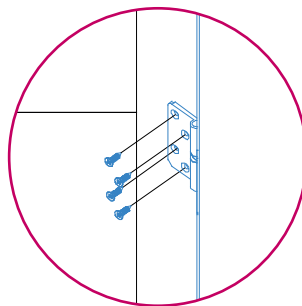
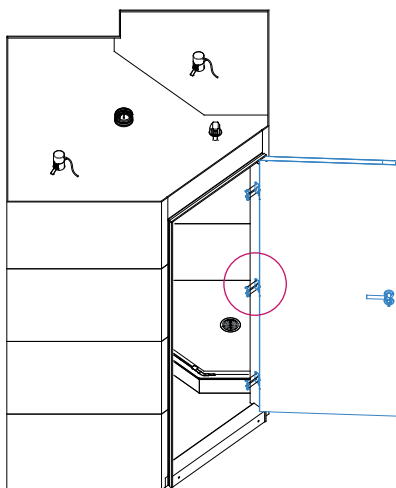


En suite Pod Panelling Instructions

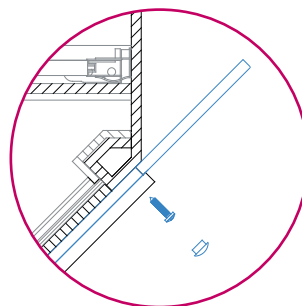
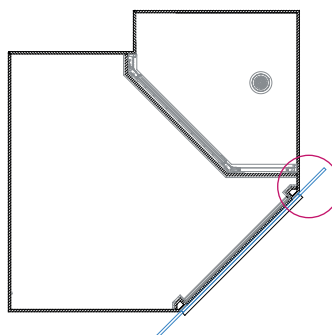
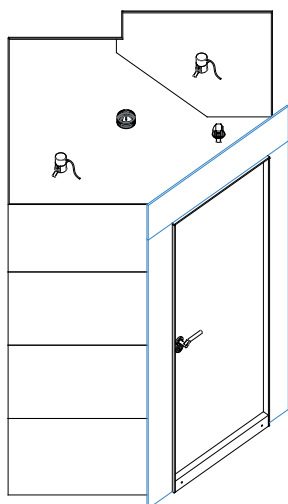
Stud and Trench Fascias

0mm Stud Type

1. Reuse previously removed screws from hinges to fix the door to side fascias.



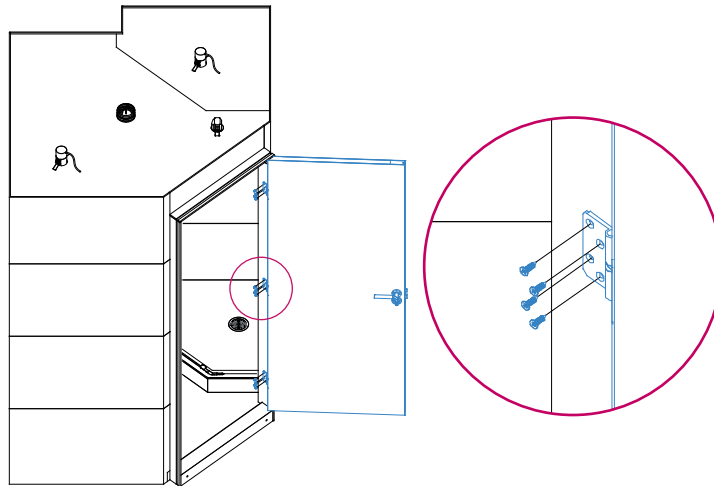
2. Add panelling around fascias and ensure that the panelling meets the fascia trenches.



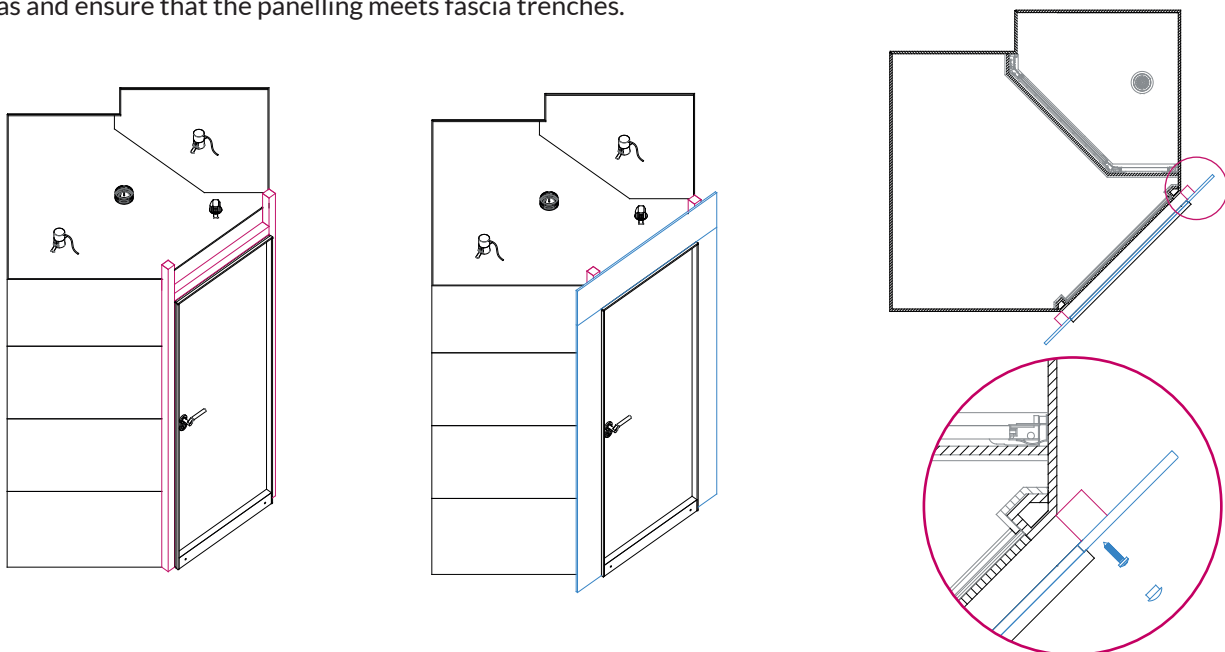
WARNING!
Do not screw through joint sections.

50mm Stud Type

1. Reuse previously removed screws from hinges to fix door to side fascias.

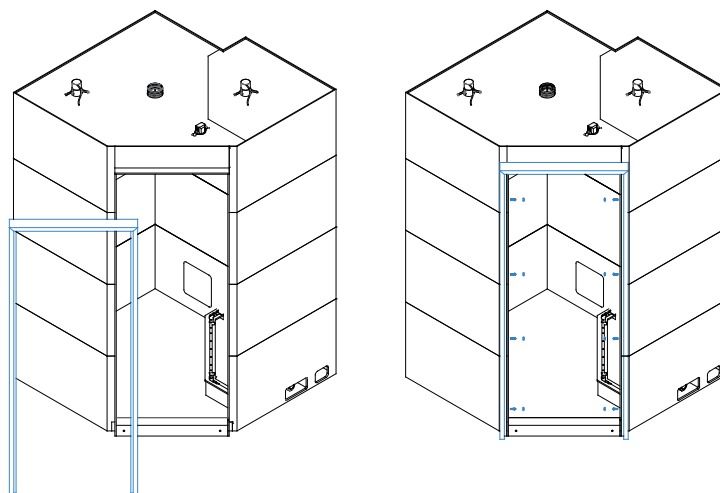


2. Add studwork around fascias. Next, add panelling around fascias and ensure that the panelling meets fascia trenches.

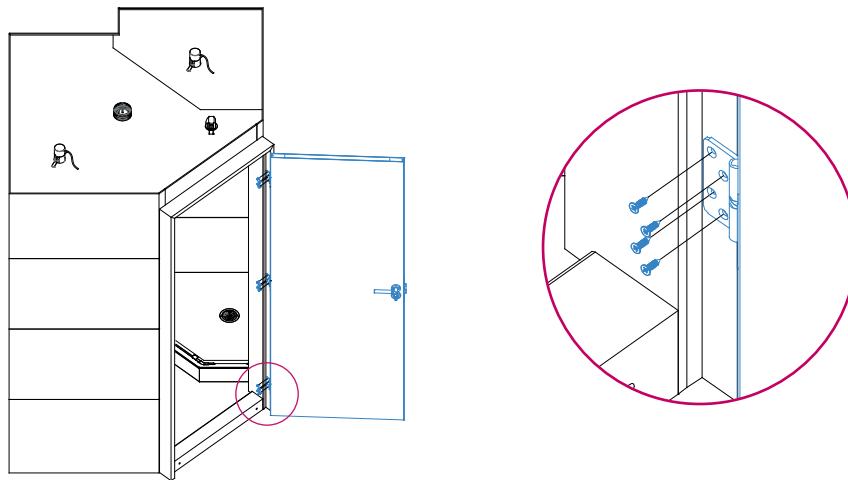


Door Casing

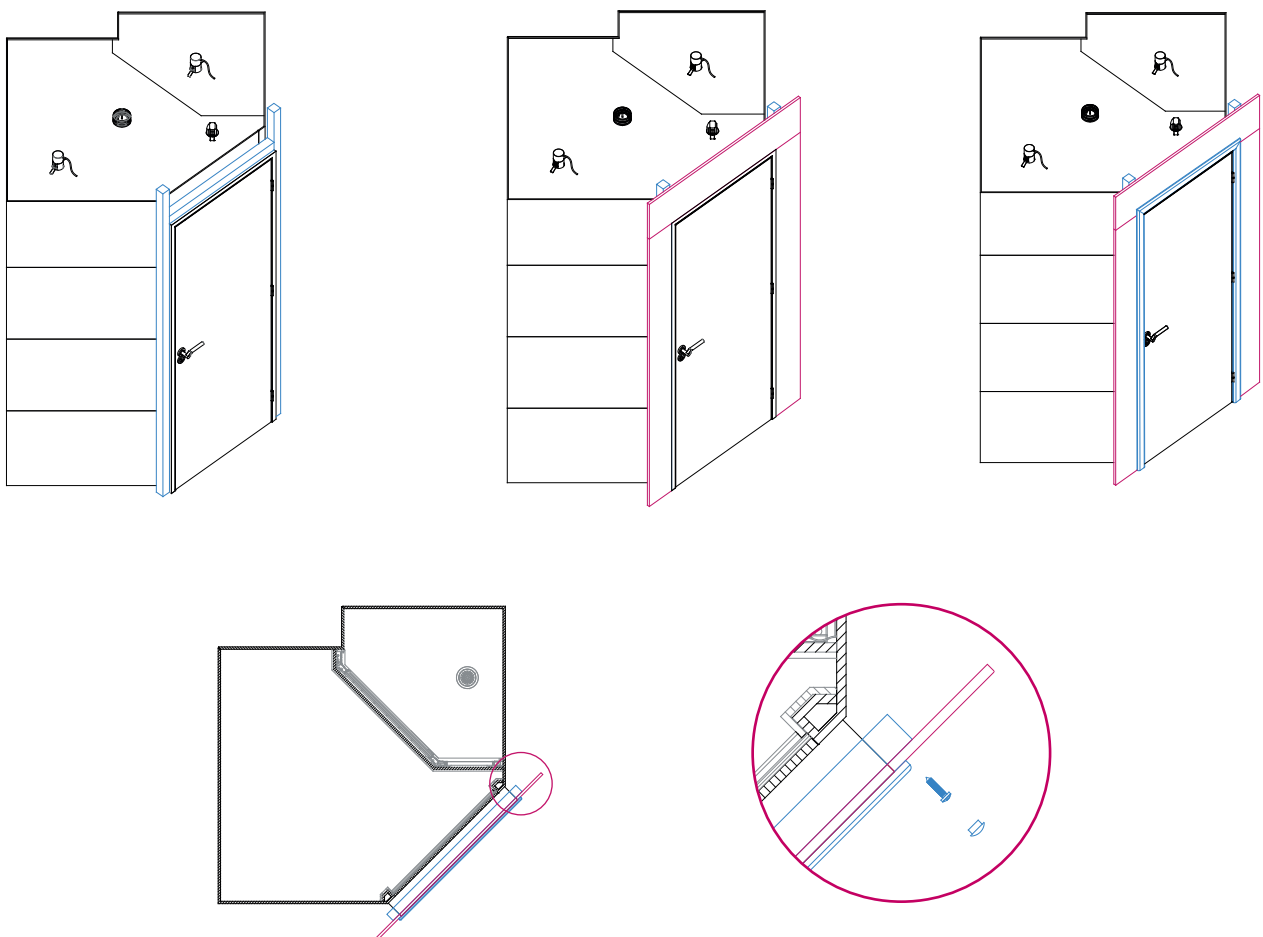
1. Use screws and cover caps to install door casing.



2. Use screws to fit door to casing.



3. Add studwork and panelling ensuring that panels are flush with door casing. Next, fit architrave.



TAPLANES LIMITED

Station Court
Nidd
Harrogate
North Yorkshire
HG3 3BG

ENQUIRIES

01423 771 645
enquiries@taplanes.co.uk
www.taplanes.co.uk