

Shower Cubicle

TAPLANES INSTALLATION INSTRUCTIONS TO BE USED AS A PRIMARY GUIDE.

**CONSULT ALL OTHER MANUFACTURERS' GUIDES
AFTER READING AND UNDERSTANDING TAPLANES
REQUIREMENTS.**

TAPLANES LIMITED

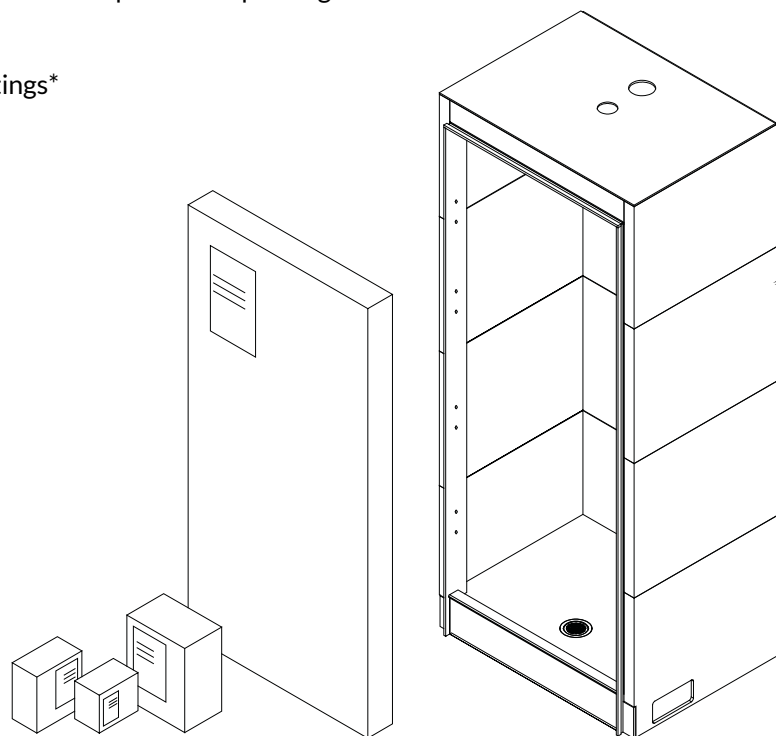
Station Court
Nidd
Harrogate
North Yorkshire
HG3 3BG

ENQUIRIES

📞 01423 771 645
✉ enquiries@taplanes.co.uk
🌐 www.taplanes.co.uk

Cubicle as Delivered to Site

- Assembled Cubicle delivered in protective packing
- LED Light*
- Extraction*
- Shower Valve and Fittings*
- Shower Door*

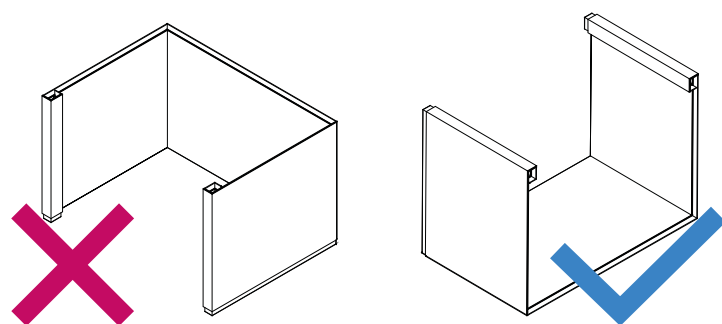


Unless stated otherwise, all parts are to be fitted on site by installers.

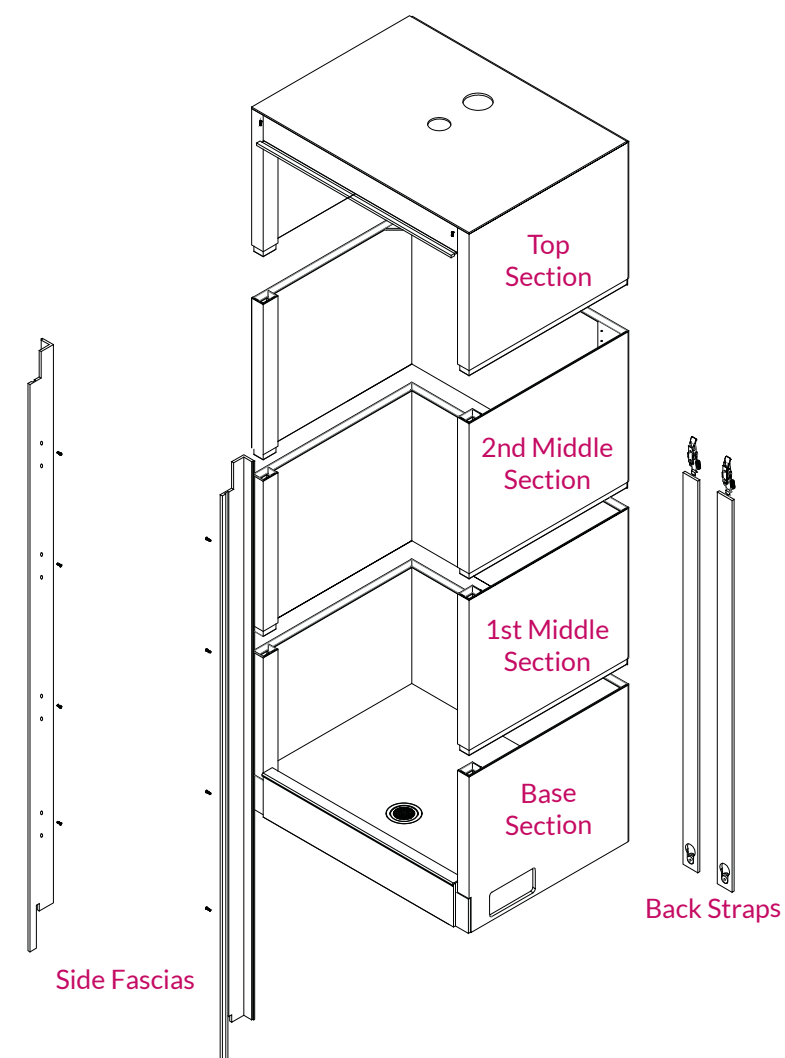
*Optional, supply only accessories. Please refer to manufacturers' installation instructions.

HANDLING GUIDELINES:

- Units are heavy and should be handled by two people when dismantling and assembling.
- Dismantle at the time of delivery if needed for access.
- Extra caution to be taken to protect tongue and groove.



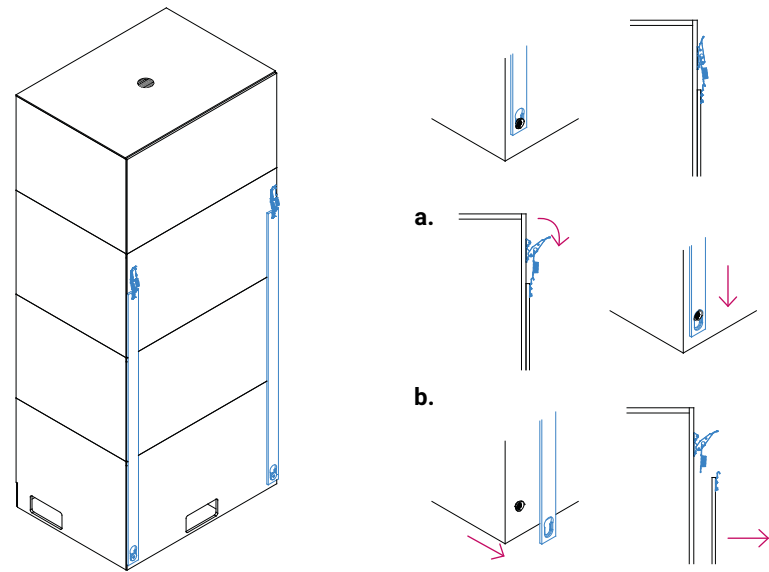
Cubicle Dismantling Instructions



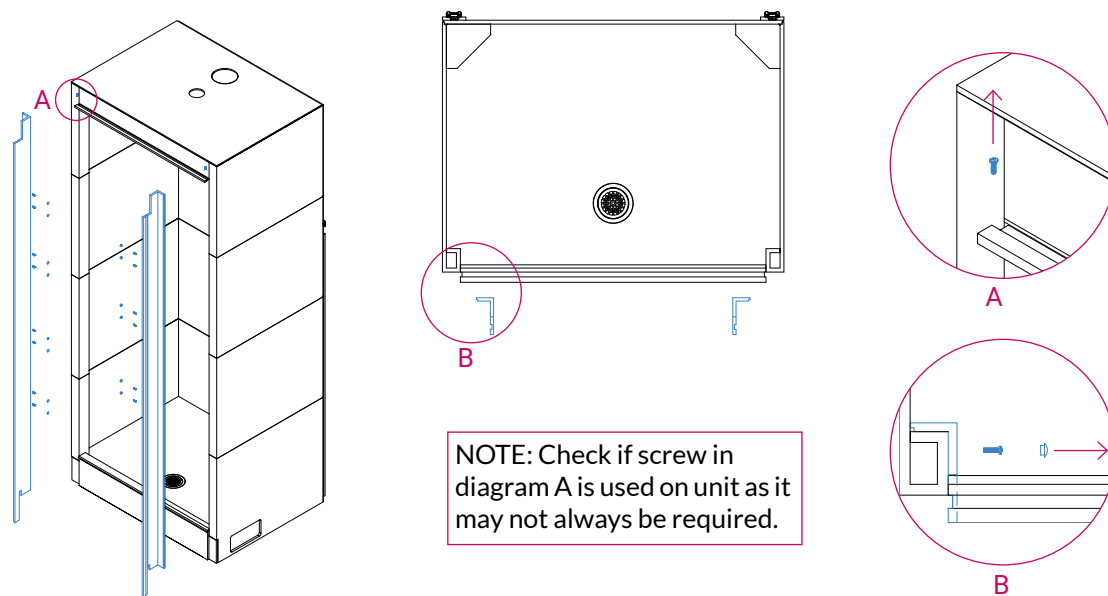
NOTE:

- Spare screws and cover caps are provided in an envelope.
- Take care not to lose any screws removed.
- Do not mix sections from different units.
- No. of sections may vary by design.

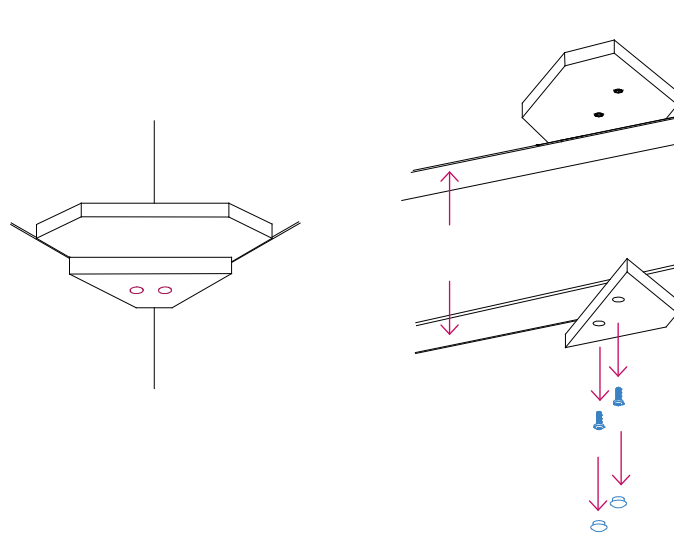
1. Remove backstraps.



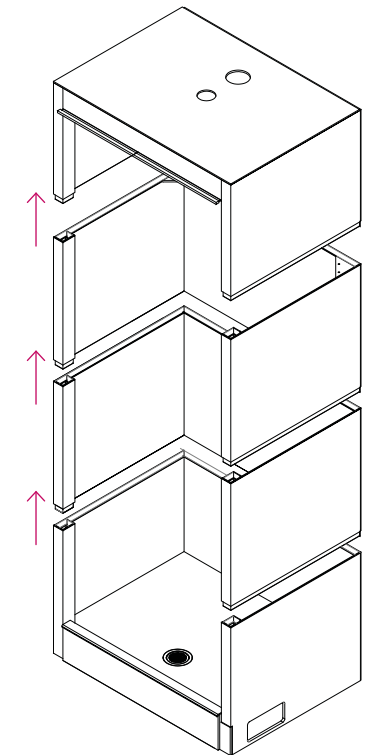
2. Take off side fascias by removing cover caps and screws. Please note the screws on top fascia must also be removed.



3. Separate soap dishes by removing cover caps and screws.

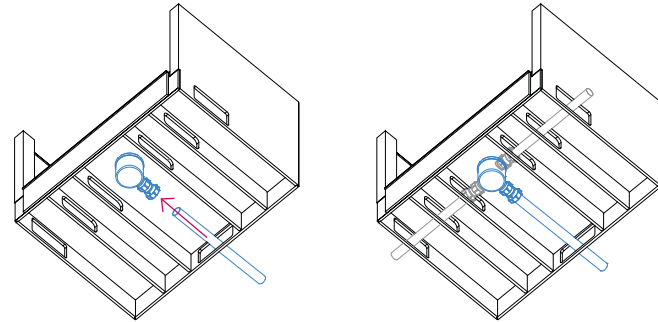


4. Lift sections in sequence from top to bottom.

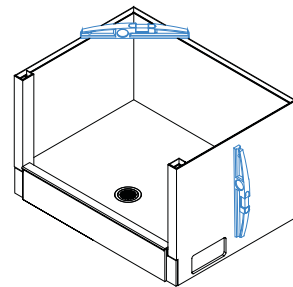


Cubicle Installation Instructions

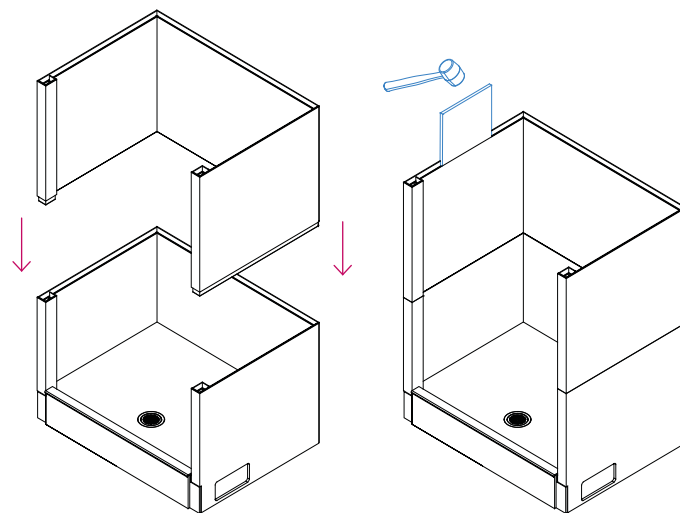
1. Plumb base section and check for leaks.



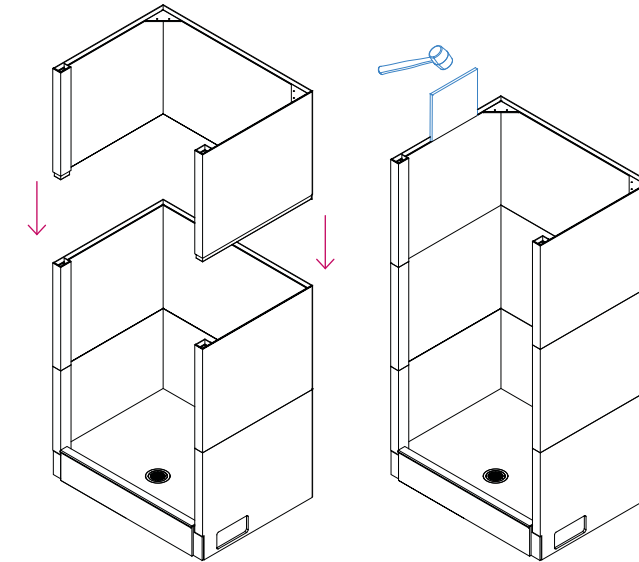
2. Position the base and check level (usually achieved with levelling compound or packers).



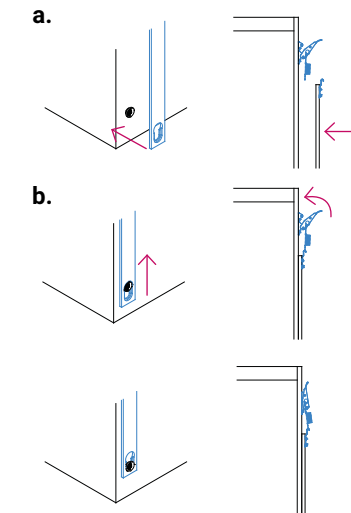
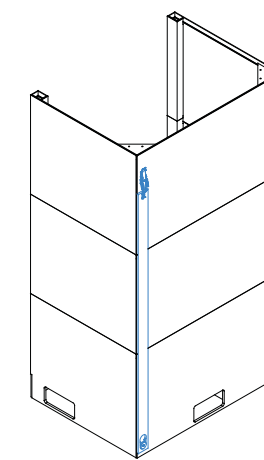
3. Slot in 1st middle section and secure with tapping tool and mallet.



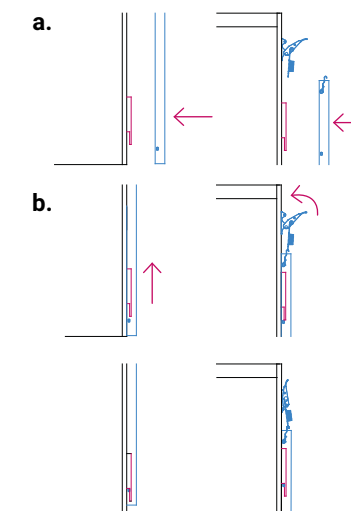
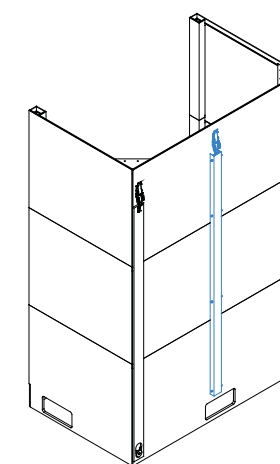
4. Slot in 2nd middle section and secure with tapping tool and mallet. Repeat with 3rd and 4th middle section if applicable.



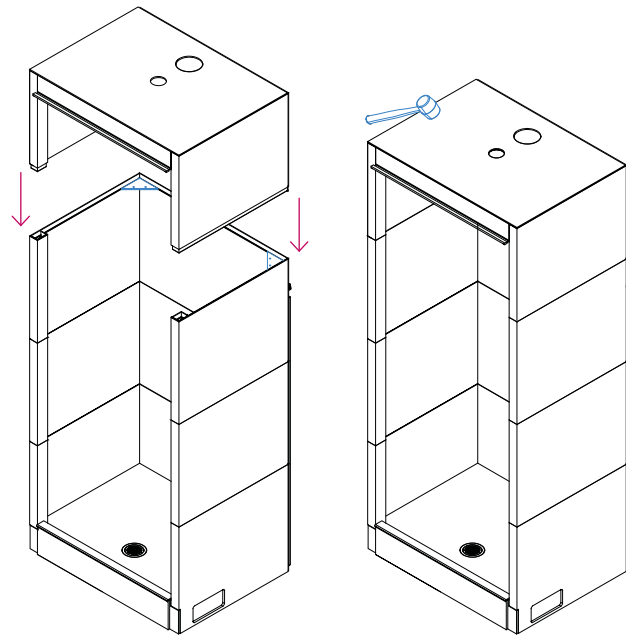
5. Attach ¾ backstraps.



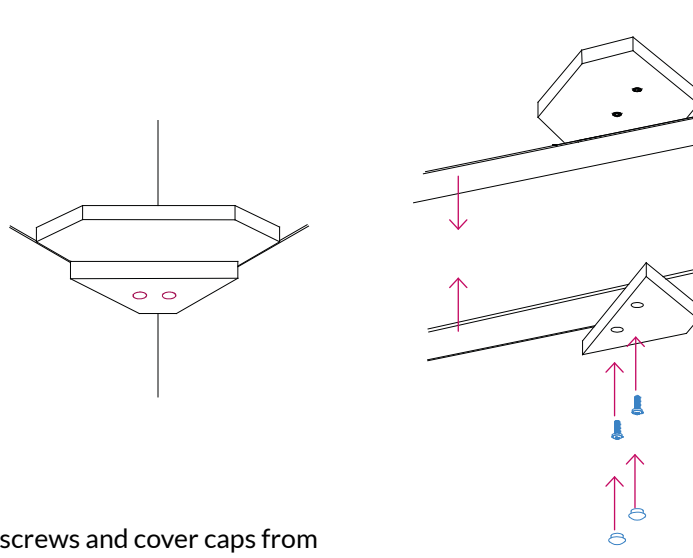
Attach ¾ aluminium backstraps if applicable.



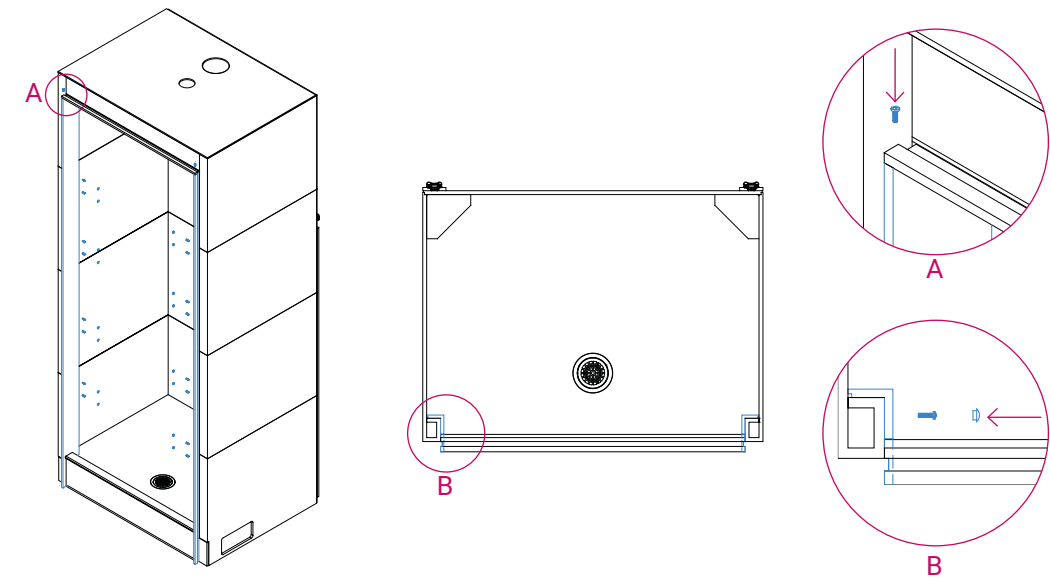
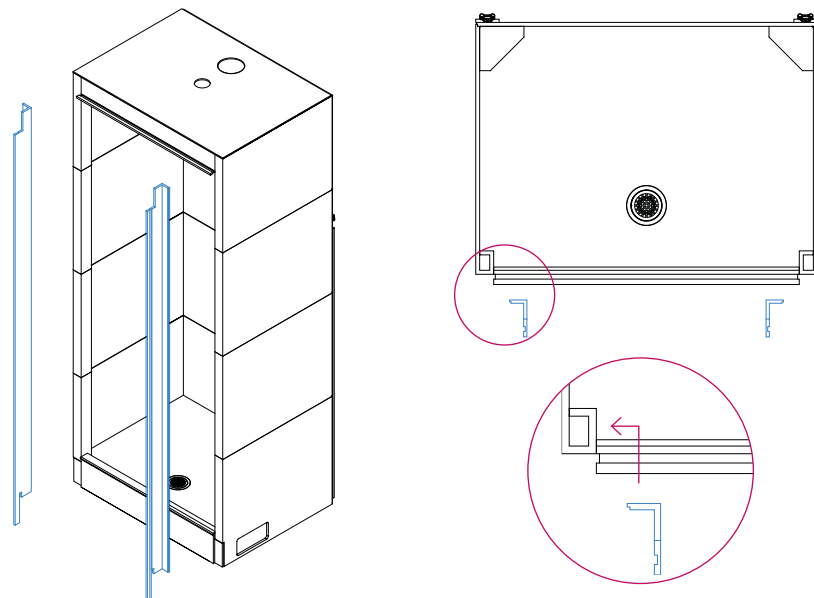
6. Slot in top section and secure with mallet.



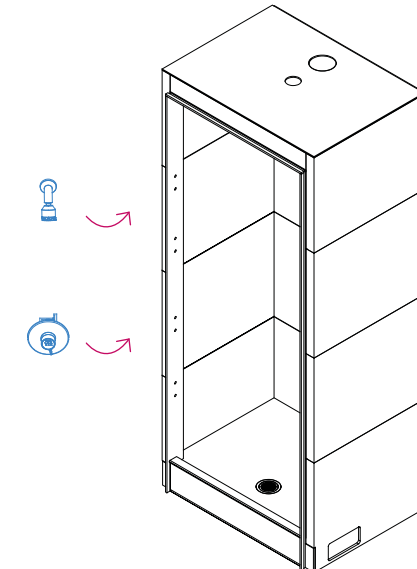
7. Secure top and last middle section by joining soap dishes with screws and fit cover caps.



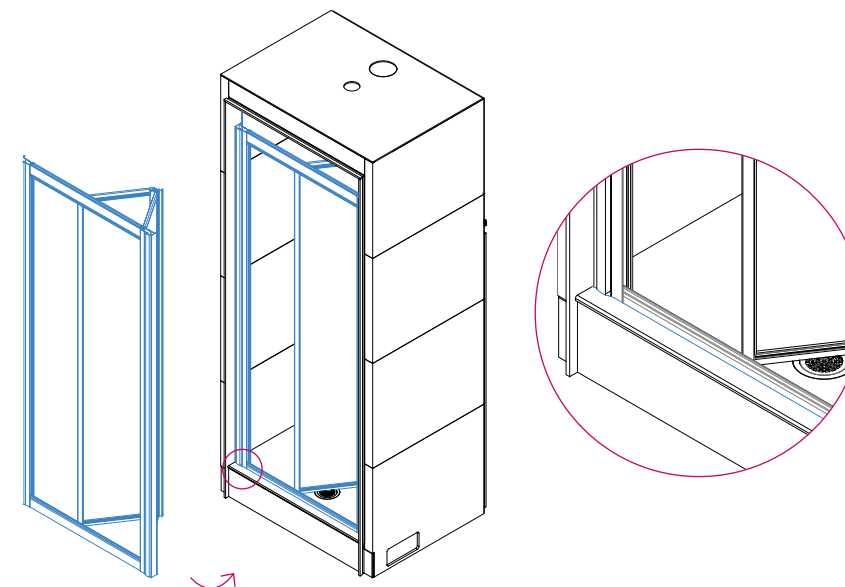
8. Fit side fascias and fix with screws and cover caps from envelope. Be sure to also use previously removed screws. Note the screws on top fascia must also be used.



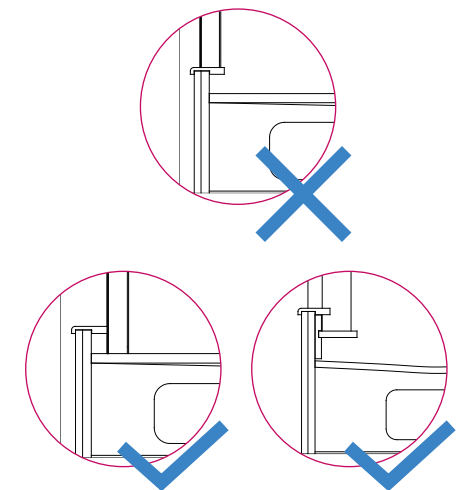
9. Refer to manufacturer's installation instructions to plumb shower fittings.



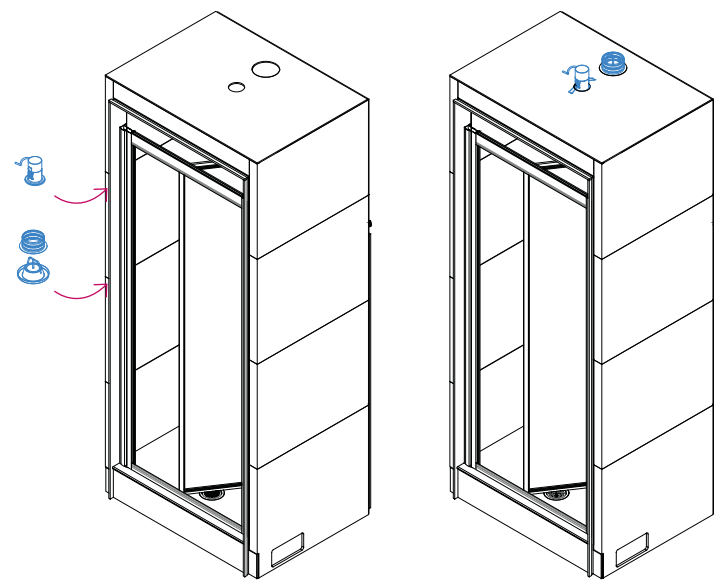
10. Refer to manufacturer's instructions to fit door. Adjust door position to ensure that shower door profile follows step profile.



NOTE: Manufacturer's guide may show the door resting on top of step. For the Taplanes cubicle, ensure that door is resting on the floor or door supports.

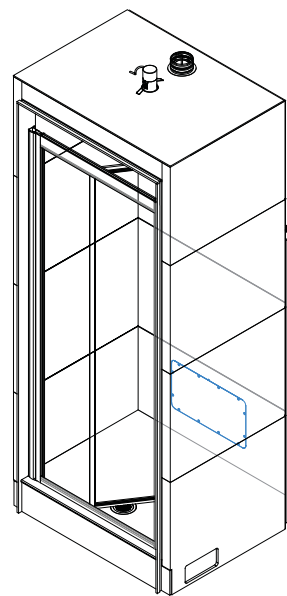


11. Refer to manufacturer's instructions to fit lights and extractors.

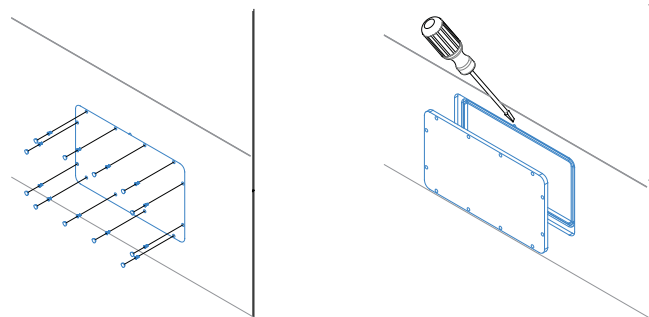


WARNING!
Lights and extractors to be installed by a certified electrician.

Removing access panel.



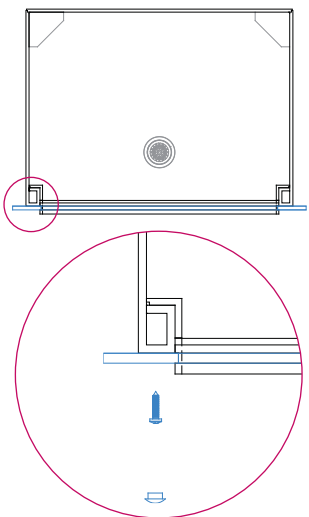
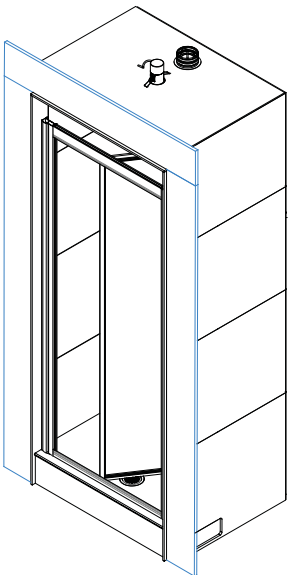
1. Remove cover caps and screws.
2. Use screwdriver to loosen access panel and remove.



Cubicle Panelling Instructions

Stud and Trench Fascias
0mm Stud Type

Add panelling around fascias and ensure that the panelling meets the fascia trenches.



WARNING!
Do not screw through joint sections.

50mm Stud Type

Add studwork around fascias.
Add panelling around fascias and ensure that the panelling meets the fascia trenches.

