

## **Shower Cubicle**

# **TAPLANES INSTALLATION INSTRUCTIONS TO BE USED AS A PRIMARY GUIDE.**

**CONSULT ALL OTHER MANUFACTURERS' GUIDES  
AFTER READING AND UNDERSTANDING TAPLANES  
REQUIREMENTS.**

### **TAPLANES LIMITED**

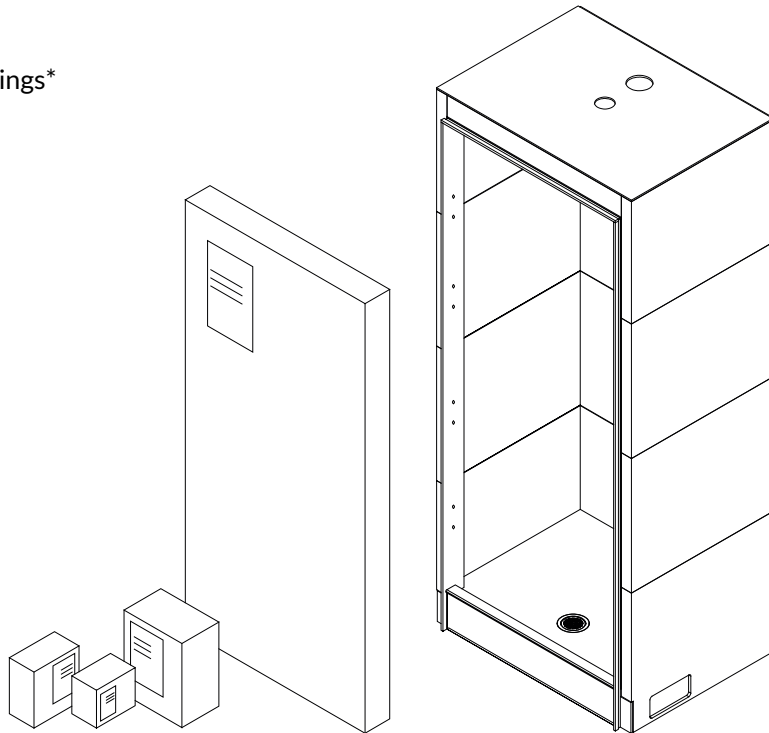
Station Court  
Nidd  
Harrogate  
North Yorkshire  
HG3 3BG

### **ENQUIRIES**

📞 01423 771 645  
✉ [enquiries@taplanes.co.uk](mailto:enquiries@taplanes.co.uk)  
🌐 [www.taplanes.co.uk](http://www.taplanes.co.uk)

## Cubicle as Delivered to Site

- Assembled Cubicle delivered in protective packing
- LED Light\*
- Extraction\*
- Shower Valve and Fittings\*
- Shower Door\*

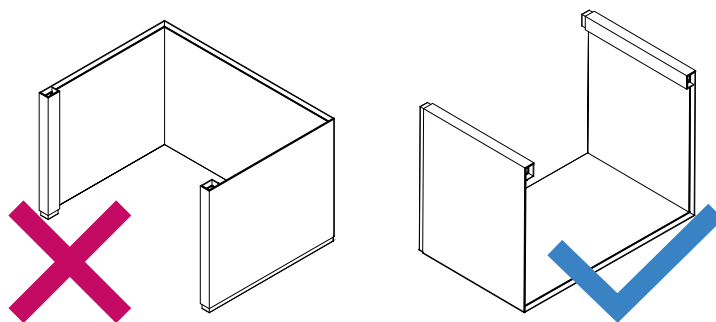


Unless stated otherwise, all parts are to be fitted on site by installers.

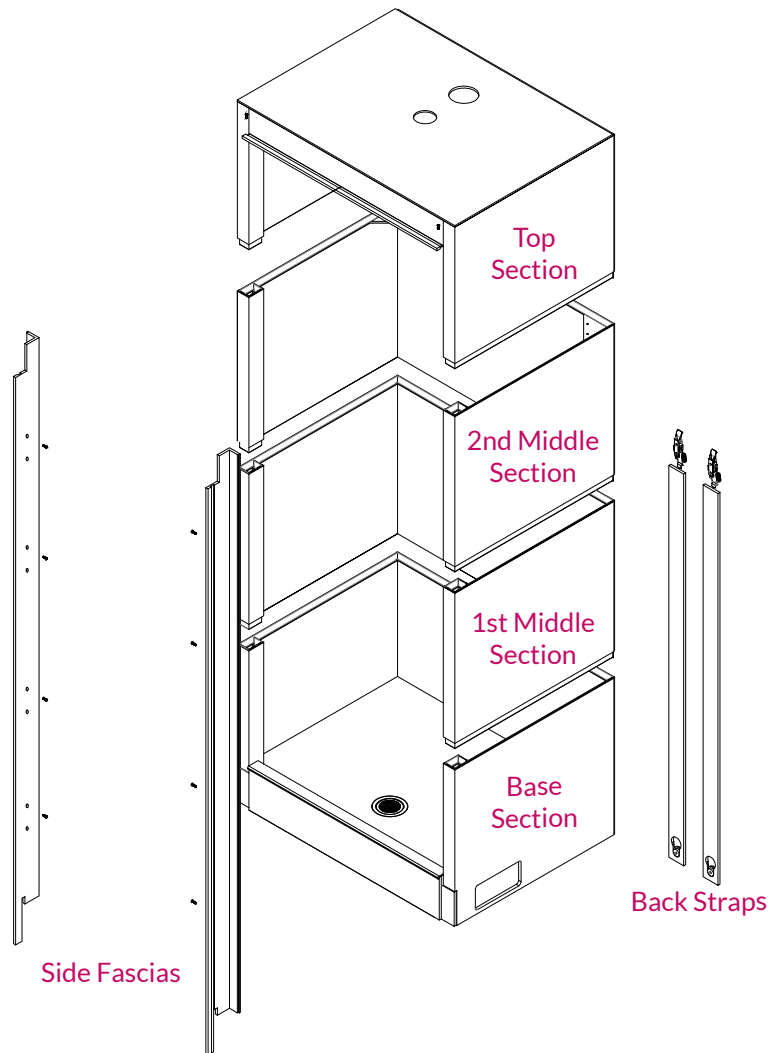
\*Optional, supply only accessories. Please refer to manufacturers' installation instructions.

### HANDLING GUIDELINES:

- Units are heavy and should be handled by two people when dismantling and assembling.
- Dismantle at the time of delivery if needed for access.
- Extra caution to be taken to protect tongue and groove.



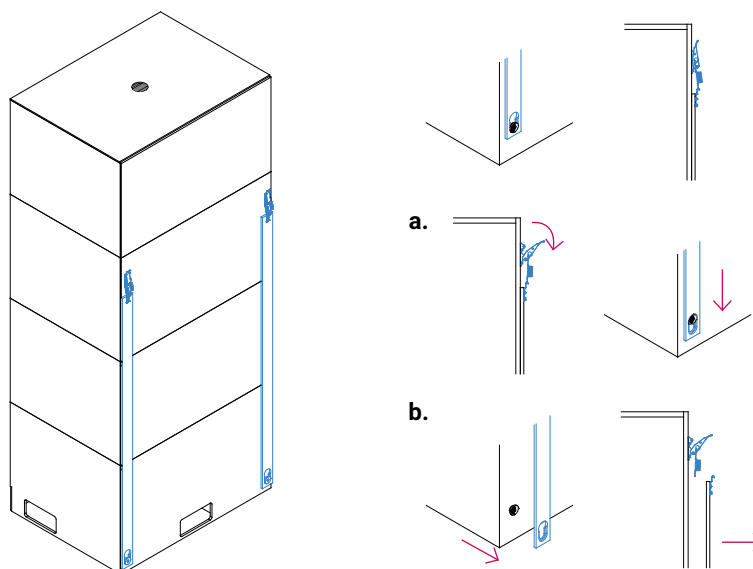
## Cubicle Dismantling Instructions



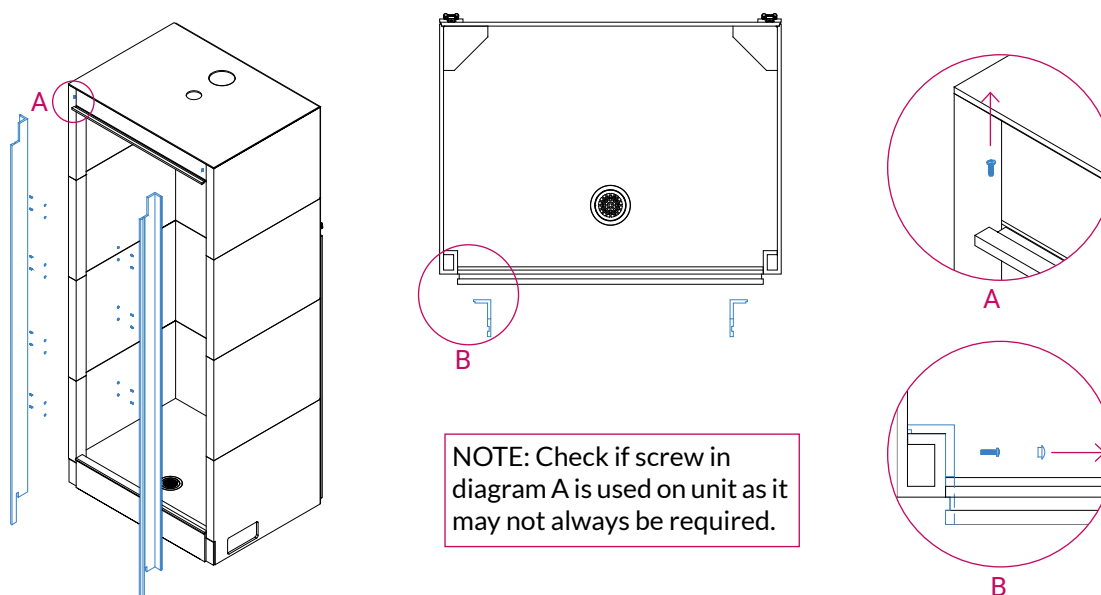
**NOTE:**

- Spare screws and cover caps are provided in an envelope.
- Take care not to lose any screws removed.
- Do not mix sections from different units.
- No. of sections may vary by design.

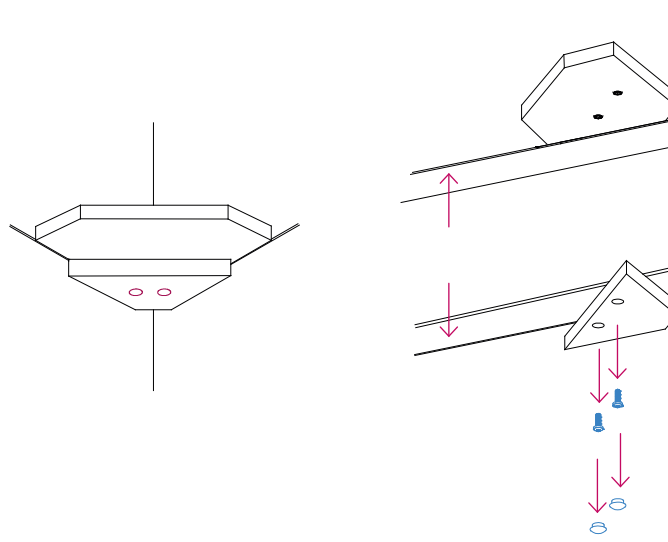
### 1. Remove backstraps.



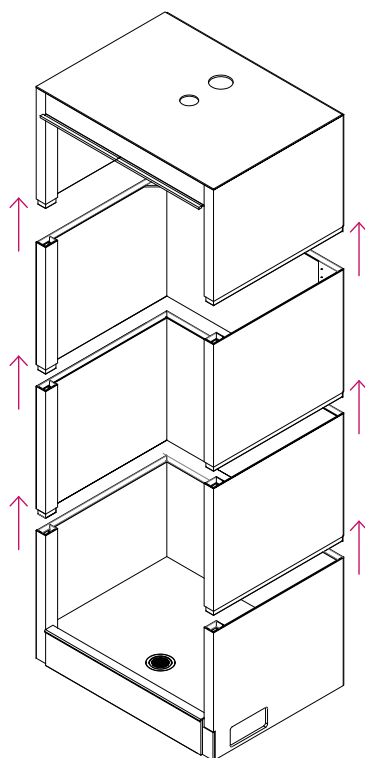
### 2. Take off side fascias by removing cover caps and screws. Please note the screws on top fascia must also be removed.



### 3. Separate soap dishes by removing cover caps and screws.

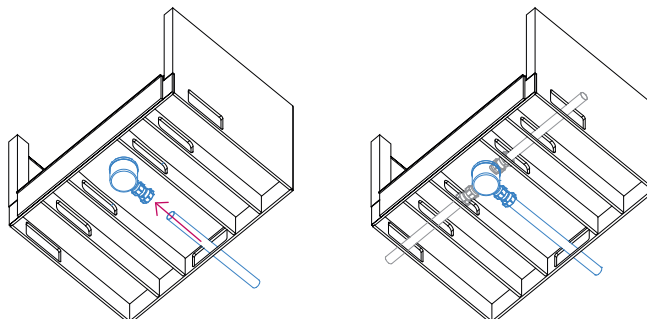


4. Lift sections in sequence from top to bottom.



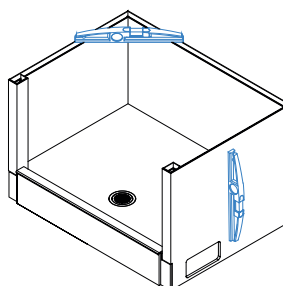
## Cubicle Installation Instructions

1. Plumb base section and check for leaks.

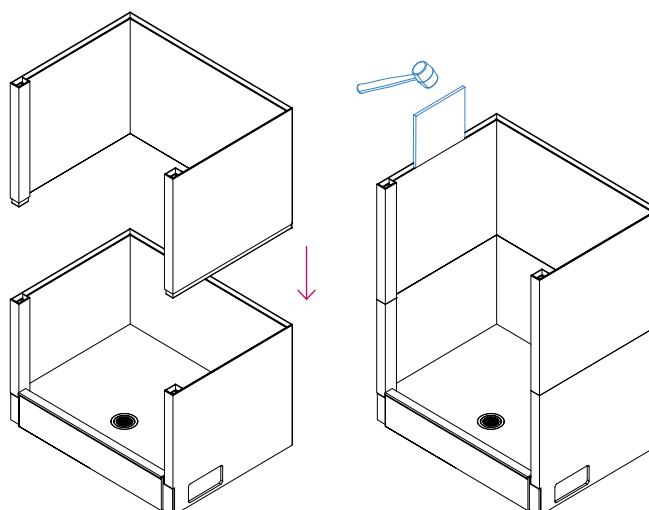


2. Position the base and check level (usually achieved with levelling compound or packers).

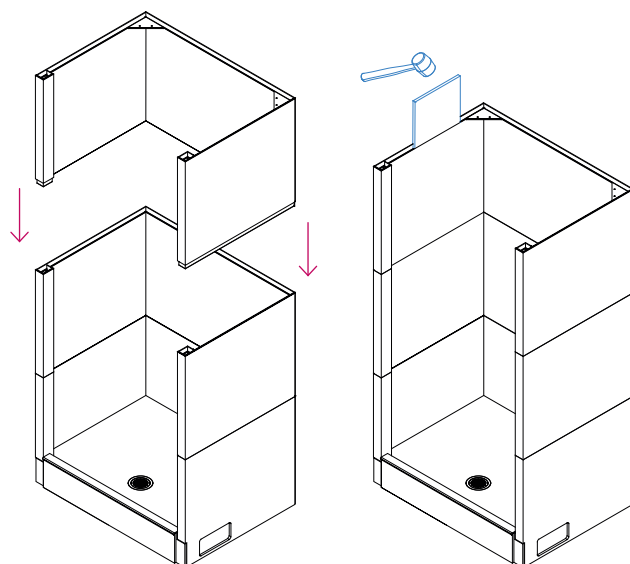
NOTE: Ensure that the base is secured in place by fixing it to a wall or to finished floor mounted brackets.



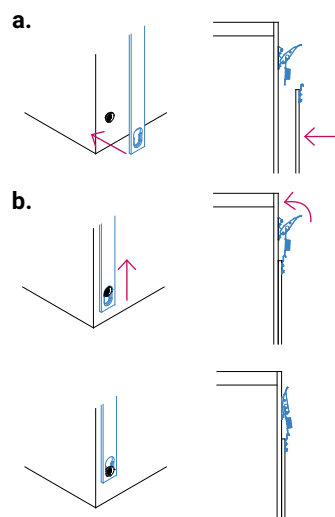
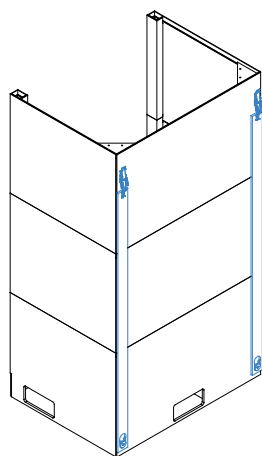
3. Slot in 1st middle section and secure with tapping tool and mallet.



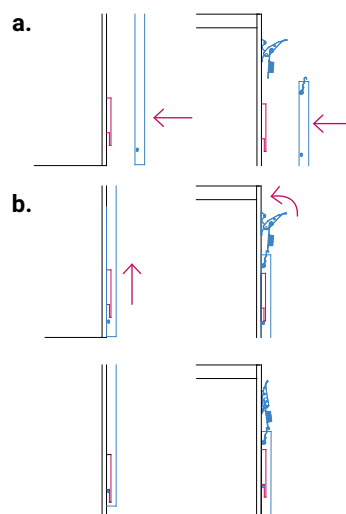
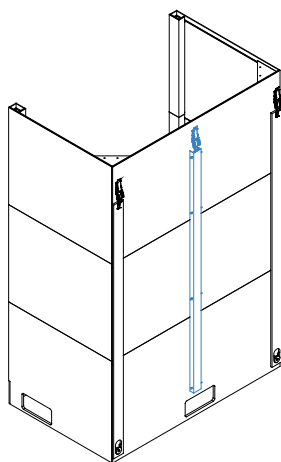
**4.** Slot in 2nd middle section and secure with tapping tool and mallet. Repeat with 3rd and 4th middle section if applicable.



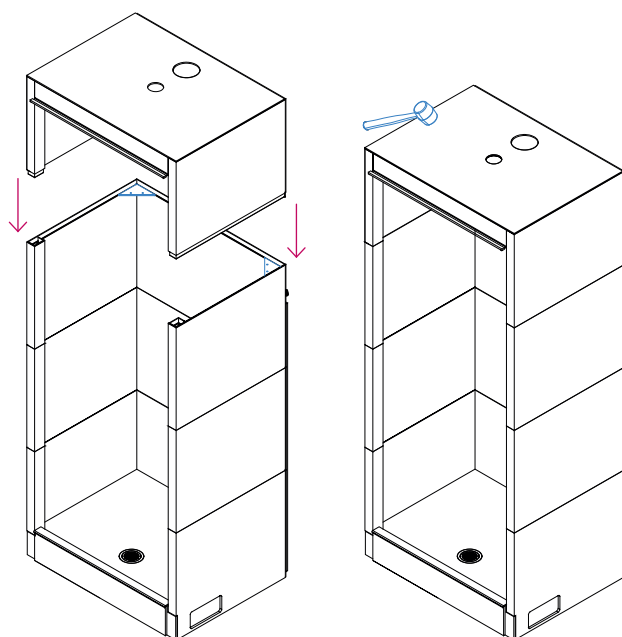
**5.** Attach  $\frac{3}{4}$  backstraps.



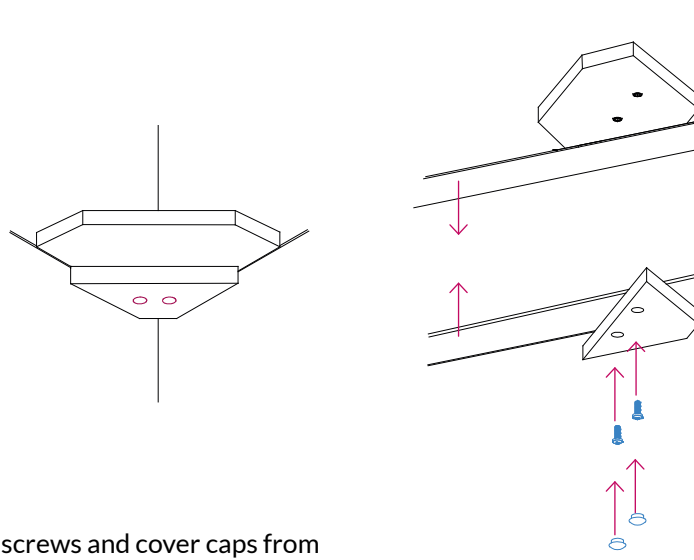
Attach  $\frac{3}{4}$  aluminium backstraps if applicable.



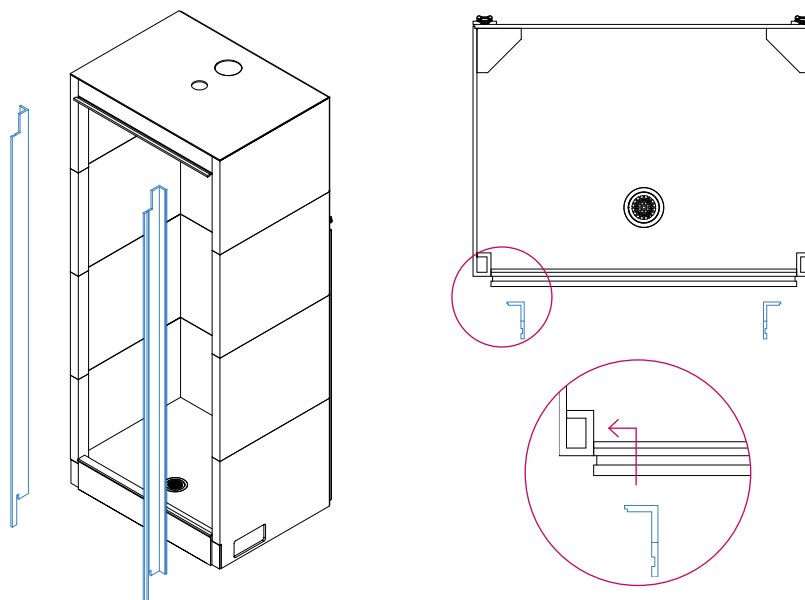
**6. Slot in top section and secure with mallet.**



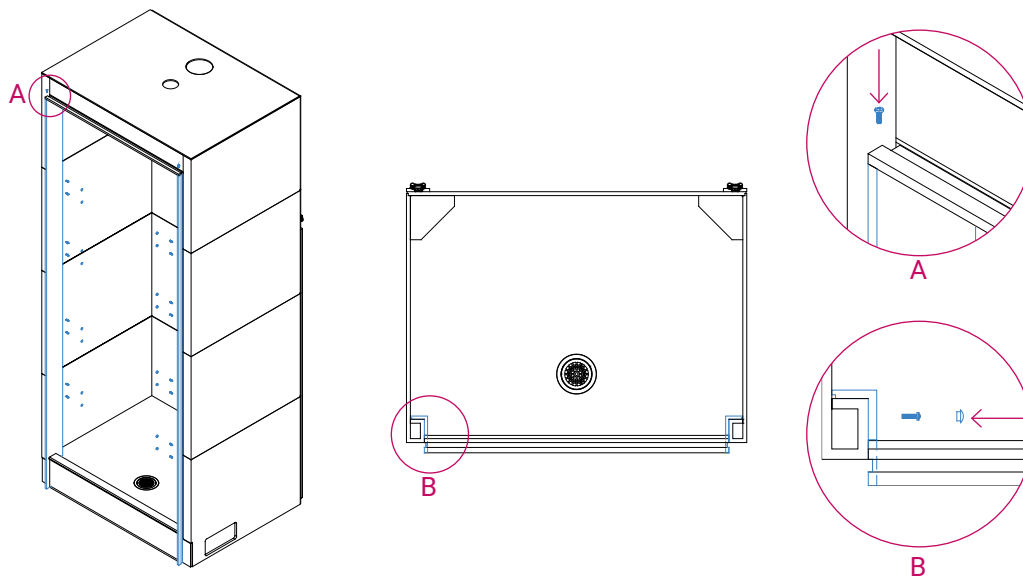
**7. Secure top and last middle section by joining soap dishes with screws and fit cover caps.**



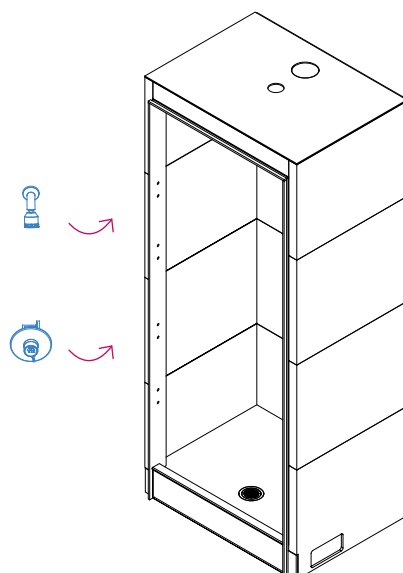
**8. Fit side fascias and fix with screws and cover caps from envelope. Be sure to also use previously removed screws. Note the screws on top fascia must also be used.**





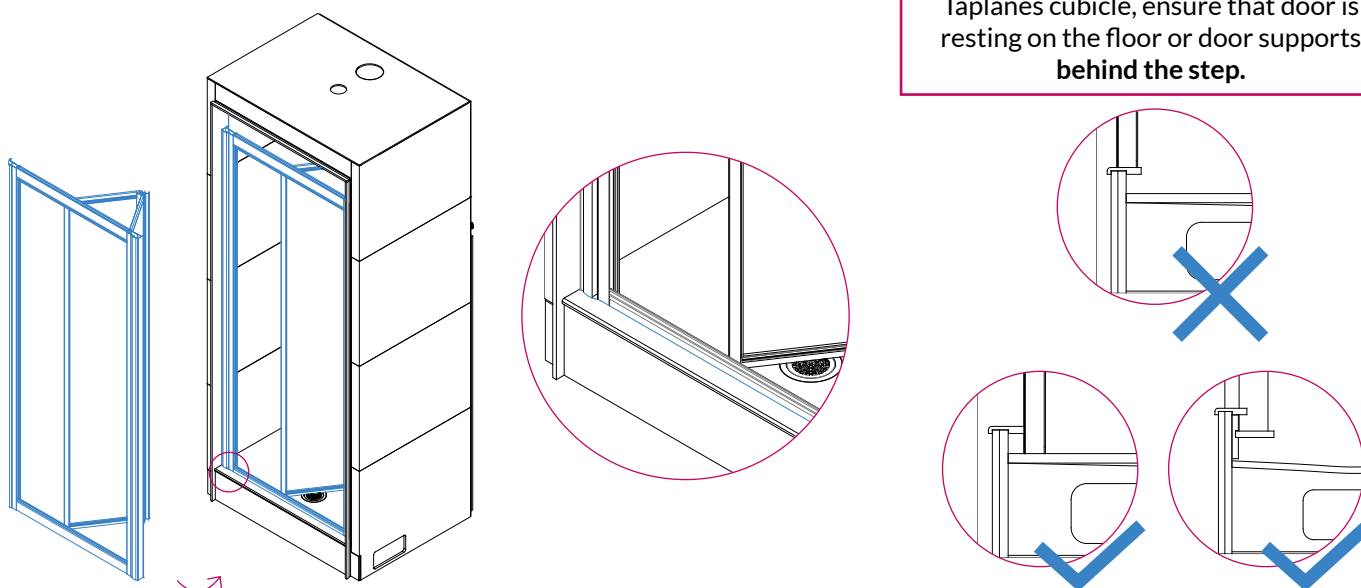


9. Refer to manufacturer's installation instructions to plumb shower fittings.

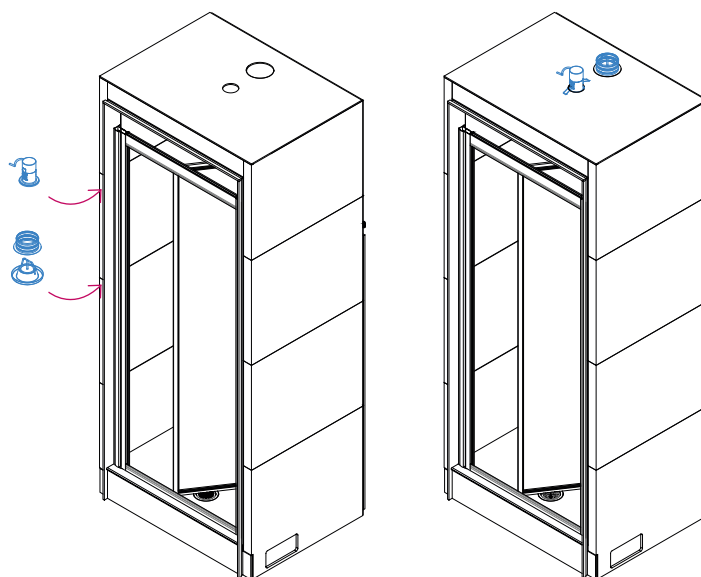


10. Refer to manufacturer's instructions to fit door. Adjust door position to ensure that shower door profile follows step profile.

NOTE: Manufacturer's guide may show the door resting on top of step. For the Taplanes cubicle, ensure that door is resting on the floor or door supports behind the step.



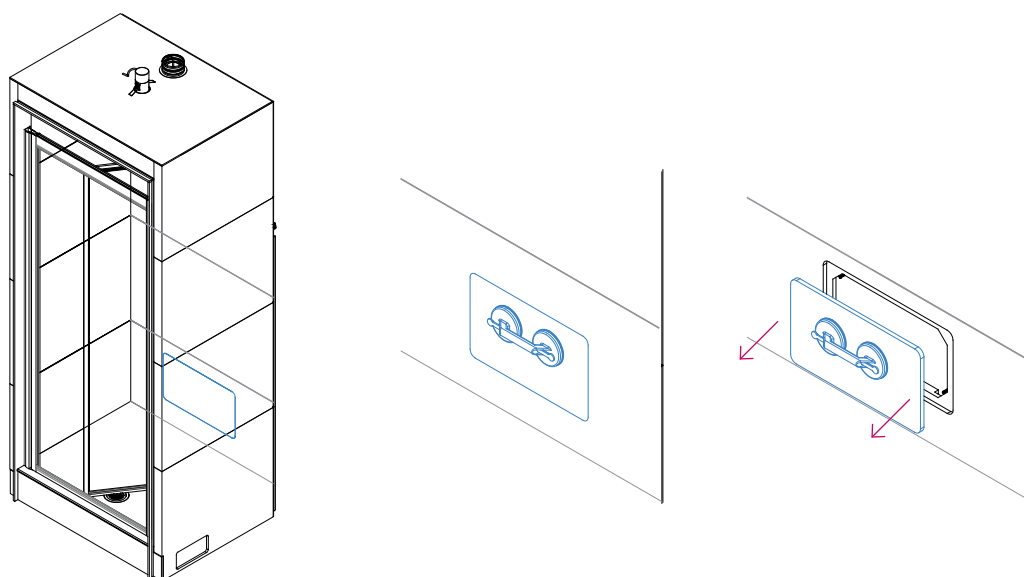
**11. Refer to manufacturer's instructions to fit lights and extractors.**



**WARNING!**  
Lights and extractors to be installed by a certified electrician.

### Removing access panel.

Use suction pads to pull out the access panel.

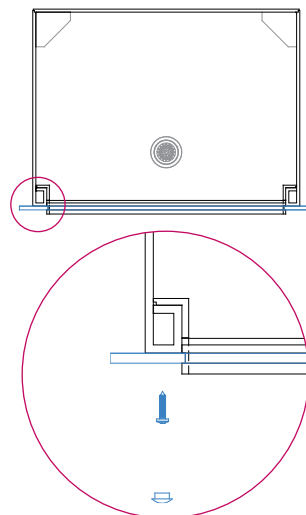
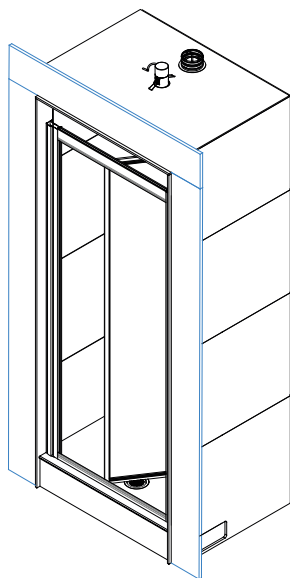


## Cubicle Panelling Instructions

### Stud and Trench Fascias

#### 0mm Stud Type

Add panelling around fascias and ensure that the panelling meets the fascia trenches.



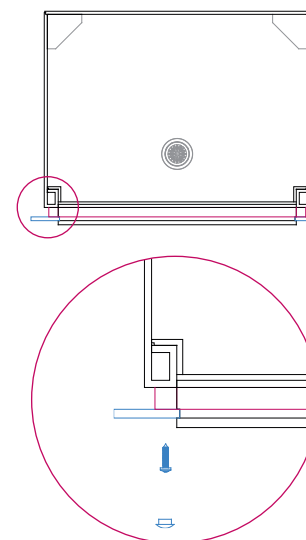
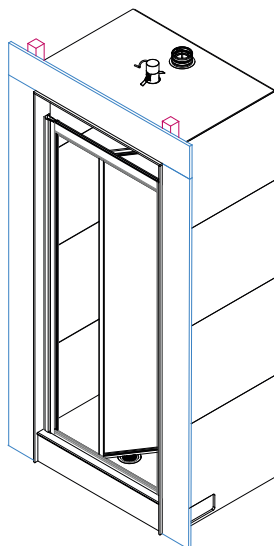
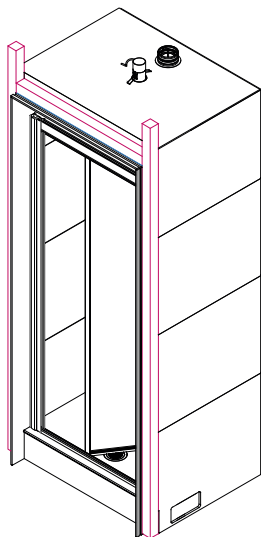
#### **WARNING!**

Do not screw through joint sections.

#### 50mm Stud Type

Add studwork around fascias.

Add panelling around fascias and ensure that the panelling meets the fascia trenches.



### TAPPLANES LIMITED

Station Court  
Nidd  
Harrogate  
North Yorkshire  
HG3 3BG

### ENQUIRIES

01423 771 645  
enquiries@tapplanes.co.uk  
www.tapplanes.co.uk